

# Frittenden Church of England Primary School

## Supporting Pupils with Medical Conditions Policy



Shepherding our school community to enrich God's world and flourish.

<b>Policy Control</b>	
Responsible Person:	Nichola Costello
Responsible Governor Team:	FGB
Approved by Governors:	September 28 2022
Date due for review (2 years):	September 2024

***Our school policies are written with the objective of continuously improving the school in our aim of realising the school's vision:***

### **Our Vision**

At our school each child is known and nurtured in our inclusive family; we value each member of our community equally. Our enriching curriculum develops the whole child to find joy in the every day. We are responsible and respectful, outward looking environmentalists who shepherd God's world and each other.

### **Our School Values**

Frittenden Church of England Primary School values

**Compassion • Respect • Joy**

This policy is written in line with the requirements of:-

- Children and Families Act 2014 - section 100
- Supporting pupils at school with medical conditions: statutory guidance for governing bodies of maintained schools and proprietors of academies in England, DfE Sept 2014
- 0-25 SEND Code of Practice, DfE 2014
- Mental Health and behaviour in schools: departmental advice for school staff, DfE June 2014
- Equalities Act 2010
- Schools Admissions Code, DfE 1 Feb 2010

This policy should be read in conjunction with the following school policies:

SEN Policy / SEN Information Report

Safeguarding Policy

Off-site visits policy,

Complaints Policy

Health & Safety Policy

This policy will be developed with parents and carers of children with medical conditions across the whole school. This process will involve emailing the draft Medical Policy to all relevant parents for their information, with a request for any comments/responses to be returned within one week. The responses will be collated and a small working party developed, to include the SEN Governor, SENCo and parents who respond to consultation. The draft will then be revised and presented to the Governing Body for review, before the final draft is completed and published on the website. The Medical Policy will be reviewed *annually*.

## Definitions of medical Conditions

Pupils' medical needs may be broadly summarised as being of two types:-

**Short-term** affecting their participation at school because they are on a course of medication.

**Long-term** potentially limiting access to education and requiring on-going support, medicines or care while at school to help them to manage their condition and keep them well, including monitoring and intervention in emergency circumstances. It is important that parents feel confident that the school will provide effective support for their child's medical condition and that pupils feel safe.

Some children with medical conditions may be considered disabled. Where this is the case governing bodies **must** comply with their duties under the Equality Act 2010. Some may also have special educational needs (SEN) and may have a statement or Education, Health and Care Plan (EHCP). Where this is the case this policy should be read in conjunction with the 0-25 SEND Code of Practice and the school's SEN policy / SEN Information Report and the individual healthcare plan will become part of the EHCP.

## The statutory duty of the governing body

The governing body remains legally responsible and accountable for fulfilling their statutory duty for supporting pupils at school with medical conditions. The governing body of Frittenden Church of England Primary School fulfil this by:-

- Ensuring that arrangements are in place to support pupils with medical conditions. In doing so we will ensure that such children can access and enjoy the same opportunities at school as any other child;
- Taking into account that many medical conditions that require support at school will affect quality of life and may be life-threatening. Some will be more obvious than others and therefore the focus is on the needs of each individual child and how their medical condition impacts on their school life;
- Ensuring that the arrangements give parents and pupils confidence in the school's ability to provide effective support for medical conditions, should show an understanding of how medical conditions impact on a child's ability to learn, as well as increase their confidence and promote self-care. We will ensure that staff are properly trained to provide the support that pupils need;
- Ensuring that no child with a medical condition is denied admission, or prevented from taking up a place in school because arrangements for their medical condition have not been made. However, in line with safeguarding duties, we will ensure that pupils' health is not put at unnecessary risk from, for example, infectious diseases, and reserve the right to refuse admittance to a child at times where it would be detrimental to the health of that child or others to do so;
- Ensuring that the arrangements put in place are sufficient to meet our statutory duties and ensure that policies, plans, procedures and systems are properly and effectively implemented;
- Developing a policy for supporting pupils with medical conditions that is reviewed regularly and accessible to parents and school staff (this policy);
- Ensuring that the policy includes details on how the policy will be implemented effectively, including a named person who has overall responsibility for policy implementation (see section below on policy implementation);
- Ensuring that the policy sets out the procedures to be followed whenever the school is notified that a pupil has a medical condition (see section below on procedure to be followed when notifications is received that a pupil has a medical condition);
- Ensuring that the policy covers the role of individual healthcare plans, and who is responsible for their development, in supporting pupils at school with medical conditions (see section below on individual healthcare plans);

- Ensuring that the school policy clearly identifies the roles and responsibilities of all those involved in arrangements for supporting pupils at school with medical conditions and how they will be supported, how their training needs will be assessed and how and by whom training will be commissioned and provided (see section below on staff training and support);
- Ensuring that the school policy covers arrangements for children who are competent to manage their own health needs and medicines (see section below on the child's role in managing their own medical needs);
- Ensuring that the policy is clear about the procedures to be followed for managing medicines including the completion of written records (see section below on managing medicines on school premises);
- Ensuring that the policy sets out what should happen in an emergency situation (see section below on emergency procedures);
- Ensuring that the arrangements are clear and unambiguous about the need to support actively pupils with medical conditions to participate in school trips and visits, or in sporting activities, and not prevent them from doing so (see section on day trips, residential trips and sporting activities);
- Considering whether to
  - develop transport healthcare plans in conjunction with the LA for pupils with life-threatening conditions who use home- to- school transport
  - Purchase and train staff in the use of defibrillators
  - Once regulations are changed consider holding asthma inhalers for emergency use;
- Ensuring that the policy is explicit about what practice is not acceptable (see section on unacceptable practice);
- Ensuring that the appropriate level of insurance is in place and appropriate to the level of risk (see section on Liability and Indemnity);
- Ensuring that the policy sets out how complaints may be made and will be handled concerning the support to pupils with medical conditions (see section on complaints).

## **Policy implementation**

The statutory duty for making arrangements for supporting pupils at school with medical conditions rests with the governing Body. The governing body have conferred the following functions of the implementation of this policy to the staff below; however, the governing body remains legally responsible and accountable for fulfilling our statutory duty.

The overall responsibility for the implementation of this policy is given to Nichola Costello Head teacher. They will also be responsible for ensuring that sufficient staff are suitably trained and will ensure cover arrangements in cases of staff absences or staff turnover to ensure that someone is always available and on-site with an appropriate level of training.

The SENCo and individual class teachers will be responsible in conjunction with parents/carers, for drawing up, implementing and keeping under review the individual healthcare plan for each pupil and making sure relevant staffs are aware of these plans. They will also oversee the briefing for supply teachers, preparing risk assessments for school visits and other school activities outside of the normal timetable and for the monitoring of individual healthcare plans.

All members of staff are expected to show a commitment and awareness of children's medical conditions (an updated list of children with medical conditions is held in the office and by class teachers) and the expectations of this policy. All new members of staff will be inducted into the arrangements and guidelines in this policy upon taking up their post.

### **Procedure to be followed when notification is received that a pupil has a medical condition**

This covers notification prior to admission, procedures to cover transitional arrangements between schools or alternative providers, and the process to be followed upon reintegration after a period of absence or when pupils' needs change. For children being admitted to Frittenden Church of England Primary School for the first time with good notification given, the arrangements will be in place for the start of the relevant school term. In other cases, such as a new diagnosis or a child moving to Frittenden Church of England Primary School mid-term, we will make every effort to ensure that arrangements are put in place within two weeks.

In making the arrangements, we will take into account that many of the medical conditions that require support at school will affect quality of life and may be life-threatening. We also acknowledge that some may be more obvious than others. We will therefore ensure that the focus is on the needs of each individual child and how their medical condition impacts on their school life. We aim to ensure that parents/carers and pupils can have confidence in our ability to provide effective support for medical conditions in school, so the arrangements will show an understanding of how medical conditions impact on the child's ability to learn, as well as increase their confidence and promote self-care.

We will ensure that staff are properly trained and supervised to support pupils' medical conditions and will be clear and unambiguous about the need to support actively pupils with medical conditions to participate in school trips and visits, or in sporting activities, and not prevent them in doing so. We will make arrangements for the inclusion of pupils in such activities with any adjustments as required unless evidence from a clinician such as a GP states that this is not possible. We will make sure that no child with a medical condition is denied admission or prevented from attending the school because arrangements for supporting their medical condition have not been made. However, in line with our safeguarding duties, we will ensure that all pupils' health is not put at unnecessary risk from, for example infectious disease. We will therefore not accept a child in school at times where it would be detrimental to the health of that child or others.

Frittenden Church of England Primary School does not have to wait for a formal diagnosis before providing support to pupils. In cases where a pupil's medical condition is unclear, or where there is a difference of opinion, judgements will be needed about what support to provide based on available evidence. This would normally involve some form of medical evidence and consultation with parents/carers. Where evidence conflicts, some degree of challenge may be necessary, to ensure that the right support can be put in place to support the child. These discussions will be led by the SENCo and following these discussion an individual healthcare plan will written in conjunction with the parent/carers and be put in place.

### **Individual healthcare plans**

Individual healthcare plans will help to ensure that Frittenden Church of England Primary School effectively supports pupils with medical conditions. They will provide clarity about what needs to be done, when and by whom. They will often be essential, such as in cases where conditions fluctuate or where there is a high risk that emergency intervention will be needed. They are likely to be helpful in the majority of other cases too, especially where medical conditions are long-term and complex. However, not all children will require one. The school, healthcare professional and parent/carer should agree, based on evidence, when a healthcare plan would be inappropriate or disproportionate. If consensus cannot be reached the Headteacher, is best placed to take a final view. A flow chart for identifying and agreeing the support a child needs and developing an individual healthcare plan is provided at annex A.

Individual healthcare plans will be easily accessible to all who need to refer to them, while preserving confidentiality. Plans will capture the key information and actions that are required to support the child effectively. The level of detail within the plan will depend on the complexity of the child's condition and the degree of support needed. This is important because different children with the same health condition may require very different support. Where a child has SEN but does not have a statement of EHC (Education and Health Care) plan, their special educational needs should be mentioned in their individual healthcare plan.

Individual healthcare plans (and their review) should be drawn up in partnership between the school, parents/carers and a relevant healthcare professional eg school, specialist or children's community nurse, who can best advise on the particular needs of the child. Pupils should also be involved whenever appropriate. The aim should be to capture the steps

which Frittenden Church of England Primary School should take to help manage their condition and overcome any potential barriers to getting the most from their education. Partners should agree who will take the lead in writing the plan, but responsibility for ensuring it is finalised and implemented rests with the school.

Frittenden Church of England Primary School will ensure that individual healthcare plans are reviewed at least annually or earlier if evidence is presented that the child's needs have changed. They will be developed and reviewed with the child's best interests in mind and ensure that Frittenden Church of England Primary School assesses and manages risks to the child's education, health and social wellbeing, and minimises disruption. Where a child is returning to school following a period of hospital education or alternative provision, we will work with the local authority and education provider to ensure that the individual healthcare plan identifies the support the child will need to reintegrate effectively.

Template A provides a basic template for the individual healthcare plan, and although this format may be varied to suit the specific needs of each pupil, they should all include the following information

- The medical condition, its triggers, signs, symptoms and treatments;
- The pupil's resulting needs, including medication (dose, side effects and storage) and other treatments, time, facilities, equipment, testing, access to food and drink where this is used to manage their condition, dietary requirements and environmental issues eg crowded corridors, travel time between lessons;
- Specific support for the pupil's educational, social and emotional needs - for example, how absences will be managed, requirements for extra time to complete exams, use of rest periods or additional support in catching up with lessons, counselling sessions;
- The level of support needed (some children will be able to take responsibility for their own health needs) including in emergencies. If a child is self-managing their medication, this should be clearly stated with appropriate arrangements for monitoring;
- Who will provide this support, their training needs, expectations of their role and confirmation of proficiency to provide support for the child's medical condition from a healthcare professional; and cover arrangements for when they are unavailable;
- Who in the school needs to be aware of the child's condition and the support required;
- Arrangements for written permission from parents/carer and the Head teacher, Nichola Costello, for medication to be administered by a member of staff, or self-administered by the pupil during school hours;



- Separate arrangements or procedures required for school trips or other school activities outside of the normal school timetable that will ensure the child can participate eg, risk assessment;
- Where confidentiality issues are raised by the parent/child, the designated individual to be entrusted with information about the child's condition; and
- What to do in an emergency, including whom to contact, and contingency arrangements. some children may have an emergency healthcare plan prepared by their lead clinician that could be used to inform development of their individual healthcare plan

## **Roles and responsibilities**

Please refer to the section on policy implementation for the functions that have been delegated to different, named members of staff at Frittenden Church of England Primary School.

In addition we can refer to the **Community Nursing Team** for support with drawing up Individual Healthcare Plans, provide or commission specialist medical training, liaison with lead clinicians and advice or support in relation to pupils with medical conditions.

Other **healthcare professionals, including GPs and paediatricians** should notify the Community Nursing Team when a child has been identified as having a medical condition that will require support at school. Specialist local health teams may be able to provide support, and training to staff, for children with particular conditions (eg asthma, diabetes, epilepsy)

**Pupils** with medical conditions will often be best placed to provide information about how their condition affects them. They should be fully involved in discussions about their medical support needs and contribute as much as possible to the development of, and comply with, their individual healthcare plan. Other pupils will often be sensitive to the needs of those with medical conditions, and can, for example, alert staff to the deteriorating condition or emergency need of pupils with medical conditions.

**Parents/carers** should provide the school with sufficient and up-to-date information about their child's medical needs. They may in some cases be the first to notify the school that their child has a medical condition. Parents are key partners and should be involved in the development and review of their child's individual healthcare plan, and may be involved in its drafting. They should carry out any action they have agreed to as part of its implementation, eg provide medicines and equipment and ensure they or another nominated adult are contactable at all times.

**Local authorities** are commissioners of school nurses for maintained schools and academies in Kent. Under Section 10 of the Children Act 2004, they have a duty to promote co-operation between relevant partners such as governing bodies of maintained schools, proprietors of academies, clinical commissioning groups and NHS England, with a view to improving the well-being of children with regard to their physical and mental health, and their



education, training and recreation. KCC is currently consulting on the re-organisation of its Health Needs provision which will strengthen its ability to provide support, advice and guidance, including suitable training for school staff, to ensure that the support specified within individual healthcare plans can be delivered effectively. KCC will work with us to support pupils with medical conditions to attend full time. Where pupils would not receive a suitable education in a mainstream school because of their health needs, the local authority has a duty to make other arrangements. **Statutory guidance for local authorities sets out that they should be ready to make arrangements under this duty when it is clear that a child will be away from school for 15 days or more because of health needs (whether consecutive or cumulative across the year)** education for children with health needs who cannot attend school

**Providers of health services** should co-operate with schools that are supporting children with medical conditions. They can provide valuable support, information, advice and guidance to schools, and their staff, to support children with medical conditions at school.

**Clinical commissioning groups (CCGs)** commission other healthcare professionals such as specialist nurses. They have a reciprocal duty to co-operate under Section 10 of the Children Act 2004 (as described above for local authorities). The local Health and Well-being Board provides a forum for the local authority and CCGs to consider with other partners, including locally elected representatives, how to strengthen links between education, health and care settings.

The **Ofsted** inspection framework places a clear emphasis on meeting the needs of disabled children and pupils with SEN, and considering the quality of teaching and the progress made by these pupils. Inspectors are already briefed to consider the needs of pupils with chronic or long-term medical conditions alongside these groups and to report on how well their needs are being met. Schools are expected to have a policy dealing with medical needs and to be able to demonstrate that it is being implemented effectively.

### **Staff training and support**

The following staff have received general training

School first aiders (full certificate) are:

Mrs Lara Pollard  
Miss Kylie Manktelow  
Ms Nichola Costello

Paediatric First Aiders:

Mrs Lara Pollard  
Mrs Jane Wootten  
Miss Kylie Manktelow  
Ms Nichola Costello

Named people for administering medicines:

Ms Nichola Costello  
Mrs Jane Wootten  
Mrs Donna Kneller

Template E will be used to record staff training for administration of medicines and /or medical procedures.

All staff who are required to provide support to pupils for medical conditions will be trained by healthcare professional qualified to do so. The training need will be identified by the healthcare professional during the development or review of the individual healthcare plan. We may choose to arrange training themselves and will ensure that it remains up-to-date.

Training should be sufficient to ensure that staff are competent and have confidence in their ability to support pupils with medical conditions, and to fulfil the requirements set out in the individual healthcare plans. They will need an understanding of the specific medical conditions they are being asked to deal with, their implications and preventative measures.

Staff must not give prescription medicines or undertake healthcare procedures without appropriate training (updated to reflect any individual healthcare plans). A first aid certificate does not constitute appropriate training in supporting children with medical conditions. Healthcare professionals, including the school nurse, can provide confirmation of proficiency of staff in a medical procedure, or in providing medication (see template).

All staff will receive induction training and regular whole school awareness training so that all staff are aware of the school's policy for supporting pupils with medical conditions and their role in implementing the policy. The headteacher, Nichola Costello, will seek advice from relevant healthcare professions about training needs, including preventative and emergency measures so that staff can recognise and act quickly when a problem occurs.

The family of a child will often be key in providing relevant information to school staff about how their child's needs can be met, and parents will be asked for their views. They should provide specific advice, but should not be the sole trainer.

### **The child's role in managing their own medical needs**

If, after discussion with the parent/carer, it is agreed that the child is competent to manage his/her own medication and procedures, s/he will be encouraged to do so. This will be reflected in the individual healthcare plan.

Wherever possible children will be allowed to carry their own medicines and relevant devices or should be able to access their medication for self-medication quickly and easily; these will be stored in the cupboard in Classroom or the Medical Room to ensure that the safeguarding of other children is not compromised. Frittenden Church of England Primary School does also recognise that children who take their medicines themselves and/or manage procedures may require an appropriate level of supervision. If it is not appropriate for a child to self-manage, then relevant staff will help to administer medicines and manage procedures for them.

If a child refuses to take medicine or carry out a necessary procedure, staff should not force them to do so, but follow the procedure agreed in the individual healthcare plan. Parents will be informed so that alternative options can be considered.

## **Managing medicines on school premises and record keeping**

At Frittenden Church of England Primary School the following procedures are to be followed:

- Medicines should only be administered at school when it would be detrimental to a child's health or school attendance not to do so;
- No child under 16 should be given prescription or non-prescription medicines without their parents written consent (see template B – template C applies to children who use asthma pumps) - except in exceptional circumstances where the medicine has been prescribed to the child without the knowledge of the parents. In such cases, every effort should be made to encourage the child or young person to involve their parents while respecting their right to confidentiality;
- Staff at Frittenden CEP will administer prescription and non-prescription medicines, with written consent from a parent/guardian, except never aspirin or anything containing aspirin unless prescribed by a doctor. Medication, e.g. for pain relief, should never be administered without first checking maximum dosage and when previous dose was taken. If written consent had not been given for pain relief, the parent will be contacted by telephone before medication is given.
- Where clinically possible, medicines should be prescribed in dose frequencies which enable them to be taken outside school hours;
- Frittenden Church of England School will only accept prescribed medicines, with written permission from parent/carer that are in-date, labelled, provided in the original container as dispensed by a pharmacist and include instructions for administration, dosage and storage. The exception to this is insulin which must be in-date, but will generally be available to schools inside an insulin pen or a pump, rather than its original container;
- All medicines will be stored safely in the first aid room. Children should know where their medicines are at all times and be able to access them immediately. Where relevant, they should know who holds the key to the storage facility. The key is held in a secure, but accessible, place in the school office. Medicines requiring storage below a certain temperature will be placed in the staff refrigerator.
- Medicines and devices such as asthma inhalers, blood glucose testing meters and adrenaline pens should be always readily available in the Classroom and not locked away. Asthma inhalers should be marked with the child's name.
- During school trips the first aid trained member of staff will carry all medical devices and medicines required;

- All controlled drugs will be easily accessible in an emergency. A record will be kept of any doses used and the amount of the controlled drug held in the school;
- Staff administering medicines should do so in accordance with the prescriber's instructions. Frittenden Church of England School will keep a record (see template C and D) of all medicines administered to individual children, stating what, how and how much was administered, when and by whom. Any side effects of the medication to be administered at school should be noted. Written records are kept of all medicines administered to children. These records offer protection to staff and children and provide evidence that agreed procedures have been followed;
- When no longer required, medicines should be returned to the parent/carer to arrange safe disposal. Sharps boxes should always be used for the disposal of needles and other sharps.
- The school will not administer pain killers (analgesics) at the request of a pupil under any circumstances. If a pupil suffers regularly from acute pain, such as migraine, the parents should authorise and supply appropriate pain killers for their child's use as with any other medication, with written instruction about when the child should take the medication. A member of staff will supervise the pupil taking the medication and the school will notify the parents on the day the medication is given.
- Travel sickness pills for children, can be given to the class teacher prior to a visit. These must be in an envelope with the child's name and when the pills need to be taken as well as any special instructions.

### **Emergency procedures**

Nichola Costello, Head teacher will ensure that arrangements are in place for dealing with emergencies for all school activities wherever they take place, including school trips within and outside the UK, as part of the general risk management process.

Where a child has an individual healthcare plan, this should clearly define what constitutes an emergency and explain what to do, including ensuring that all relevant staff are aware of emergency symptoms and procedures. Other pupils in the school should know what to do in general terms, such as informing a teacher immediately if they think help is needed.

If a child needs to be taken to hospital, staff should stay with the child until the parent arrives, or accompany a child taken to hospital by ambulance. Schools need to ensure they understand the local emergency services cover arrangements and that the correct information is provided for navigation systems.

## **Day trips, residential visits, and sporting activities**

We will actively support pupils with medical condition to participate in day trips, residential visits and sporting activities by being flexible and making reasonable adjustments unless there is evidence from a clinician such as a GP that this is not possible.

We will always conduct a risk assessment so that planning arrangements take account of any steps needed to ensure that pupils with medical conditions can be included safely. This will involve consultation with parents/carers and relevant healthcare professions and will be informed by Health and Safety Executive (HSE) guidance on school trips.

## **Accident Procedures**

In the event of an accident, the adult in attendance should first assess the extent of the injury and where possible administer basic first aid. In the case of more serious injuries extreme caution should be taken, and one of the registered first aiders should be called immediately to the scene of the accident and a member of the SLT should be informed. If a child is unwilling or unable to move then the emergency services should be called using 999. Under no circumstances should the child be moved prior to the arrival of the appropriate emergency service. Parents will also be contacted as soon as is possible, to advise them of the situation.

## **Childhood Illnesses**

It is important that children with common infectious diseases do not return to school too early (48hrs is guidance given). The school follows the guidelines set out by the Health Protection Agency and in conjunction with advice from the local Doctors Surgery for all common childhood illnesses.

## **Other issues for consideration**

Where a pupil uses home-to-school transport arranged by the LA and they also have a medical condition which is life-threatening, we will share the pupil's individual healthcare plan with the local authority.

Defibrillator is held at Larchmere (Care home in village – opposite the Bell and Jorrocks and at the Village Hall.

Once regulations have changed the Governing Body will consider whether to hold asthma inhalers on site for emergency use.

## **Unacceptable practice**

Although staff at Frittenden Church of England Primary School should use their discretion and judge each case on its merit with reference to the child's individual healthcare plan, it is not generally acceptable practice to:

- Prevent children from easily accessing their inhalers and medication and administering their medication when and where necessary;
- Assume that every child with the same condition requires the same treatment;
- Ignore the views of the child or their parents\carers; or ignore medical evidence or opinion (although this may be challenged);
- Send children with medical conditions home frequently or prevent them from staying for normal school activities, including lunch, unless this is specified in their individual healthcare plans;
- If the child becomes ill, send them to the school office or medical room unaccompanied.
- Penalise children for their attendance record if their absences are related to their medical condition, eg hospital appointments;
- Prevent pupils from drinking, eating or taking toilet breaks whenever they need to in order to manage their medical condition effectively;
- Require parents\carers, or otherwise make them feel obliged, to attend school to administer medication or provide medical support to their child, including with toileting issues. No parent should have to give up working because the school is failing to support their child's medical needs; or
- Prevent children from participating, or creating unnecessary barriers to children participating in any aspect of school life, including school trips, eg by requiring parents to accompany the child. (Although in some cases parent's and the school may agree that it would be in the child's best interests for a parent to attend).

## **Liability and indemnity**

Kent County Council

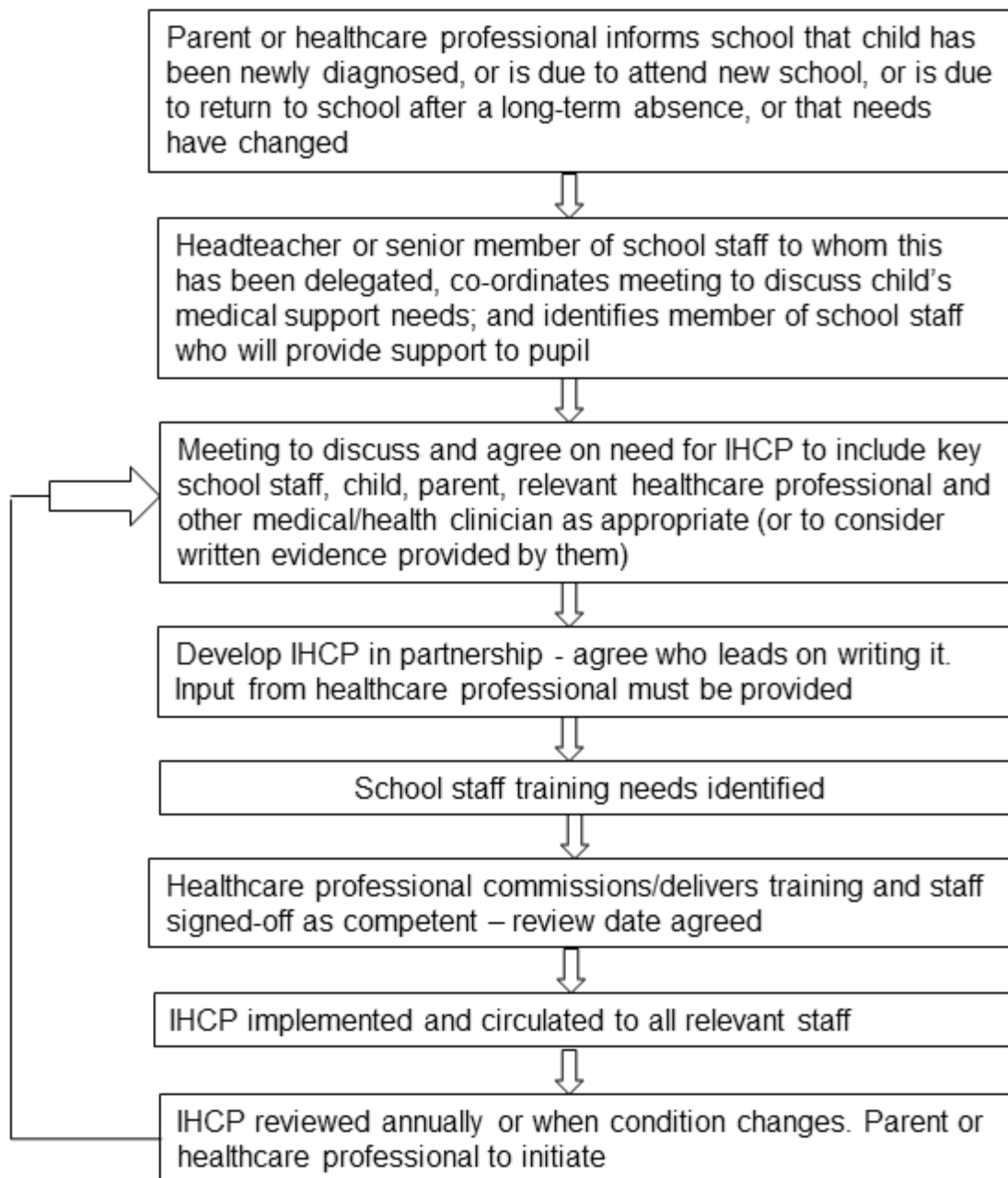
## **Complaints**

Should parents\carers be unhappy with any aspect of their child's care at Frittenden Church of England Primary School, they must discuss their concerns with the school. This will be with the child's class teacher, &/or SENCO in the first instance, with whom any issues should be addressed. If this does not resolve the problem or allay the concern, the problem should be brought to a member of leadership team, who will, where necessary, bring concerns to the attention of the Head of School or the Executive Headteacher. In the unlikely event of this not resolving the issue, the parent\carer must make a formal complaint using the Frittenden Church of England Primary School Complaints Procedure.





## Annex A: Model process for developing individual healthcare plans



**Frittenden Church of England Primary School  
Health Care Plan**

**Child's Name:**

Class	
Date of Birth	
Child's Address	
Medical Diagnosis or Condition	
Date	
Review Date	

**Family Contact Information**

Name	
Phone (work)	
Phone (home)	
Phone (mobile)	
E-mail	
Name	
Phone (work)	
Phone (home)	
Phone (mobile)	
E-mail	

**Clinic/Hospital Contact**

Name	
Phone no.	

**G.P.**

Name	
Phone no.	

Describe medical needs and give details of child's symptoms:

--

Daily care requirements (e.g. before sport/at lunchtime)

--

Describe what constitutes an emergency for the child, and action to be taken if this occurs:

Follow up care:

Who manages the child's care during school hours (state if different for off-site activities)

### Parent and School Agreement

To the best of our knowledge the above information is correct. The staff, in agreement, will do their best to support and care for .....’s medical and emergency needs.

Parents signature: \_\_\_\_\_ Date: \_\_\_\_\_

School staff signature: \_\_\_\_\_ Date: \_\_\_\_\_

Head teacher's signature: \_\_\_\_\_ Date: \_\_\_\_\_

Nurse's signature: \_\_\_\_\_ Date: \_\_\_\_\_

(to confirm advice and training has been provided to school)

## TEMPLATE B

### Parental agreement for the administration of medicines

The school/setting will not give your child medicine unless you complete and sign this form and the school/setting has a policy that staff can administer medicine

Date: \_\_\_\_\_ Childs Name \_\_\_\_\_

School: \_\_\_\_\_

Age \_\_\_\_\_ Yr Group & Class \_\_\_\_\_ DOB \_\_\_\_\_

Condition / Illness \_\_\_\_\_

Name and Strength of Medicine : \_\_\_\_\_

Where Medicine Kept : \_\_\_\_\_

Side Effects: \_\_\_\_\_

Expiry date: \_\_\_\_\_

How much (dose) to give: \_\_\_\_\_ Date of Provision \_\_\_\_\_

When to give it \_\_\_\_\_

Number of tablets given to school \_\_\_\_\_

**Note : MEDICINES MUST BE IN THE ORIGINAL CONTAINER AS DISPENSED BY THE PHARMACIST.**

---

Daytime contact number of parent or adult contact \_\_\_\_\_

Name and contact number of GP \_\_\_\_\_

Agreed review date \_\_\_\_\_

This information is, to the best of my knowledge, accurate at time of writing and I give consent to the school / setting staff, to administer the medicine in accordance with the school/setting policy. I will inform the school/ setting immediately in writing if there is any change in dosage or frequency of the medication or if the medicine is stopped.

Parent/Guardian signature \_\_\_\_\_

Print name \_\_\_\_\_

Date \_\_\_\_\_

---

### Asthma Pumps in Primary Schools

Dear Parent/Guardian

#### Asthma Pumps

Your child ..... has an asthma pump in school.

I am writing to inform you of the School's guidelines with regard to asthma pumps in school.

1. All asthma pumps will be kept in an asthma box, of which there is one in every classroom.
2. All asthma pumps will be named and it is the parent's responsibility to ensure that they are in date.
3. With the pump there will be written evidence of the frequency of usage necessary for each individual child. This is to ensure that if a child appears to need their pump rather too frequently, then the parent can be informed.
4. We strongly encourage independence so your child will not be restricted from using their pump during the course of the school day, but it is considered courteous to make the normal requests of the teacher first.
5. If the child needs their pump during breaktimes, a request to a member of staff must be made first before entering the building. If the child always needs their pump during lunchtime, then the child can give it to a Midday Supervisor for safekeeping. It will be the child's responsibility to ensure the Midday Supervisor is given it, to take back to class following lunch.

If you wish to see the School Medical Policy, please make a request to the school office.

Would you please sign and return the slip below indicating either your agreement or your wish not to keep the pump in the care of the teacher or other staff, thereby taking full responsibility yourself.

Yours sincerely

Headteacher

---

#### Asthma Pump

Child's name:..... DOB.....  
Has an asthma pump in school.

I agree and accept the school's guidelines regarding asthma pumps.

Signed.....(Parent/Guardian)      Date.....



TEMPLATE E

**(to be completed for each member of staff involved in a care plan)**

**Record of advice, awareness raising, support and guidance to the school**

Name of school / setting \_\_\_\_\_

Name of staff \_\_\_\_\_

Type of awareness raising received \_\_\_\_\_

Date of Session: \_\_\_\_\_

Training provided by: \_\_\_\_\_

Profession: \_\_\_\_\_ Title: \_\_\_\_\_

---

I confirm that

\_\_\_\_\_

Has received awareness training detailed above and is competent to carry out the appropriate procedures

I recommend that the training is updated

\_\_\_\_\_  
(State frequency)

Signature of health professional

\_\_\_\_\_

Date

\_\_\_\_\_

I confirm that I have received the awareness raising as detailed above

Staff signature

\_\_\_\_\_

Date

\_\_\_\_\_

---