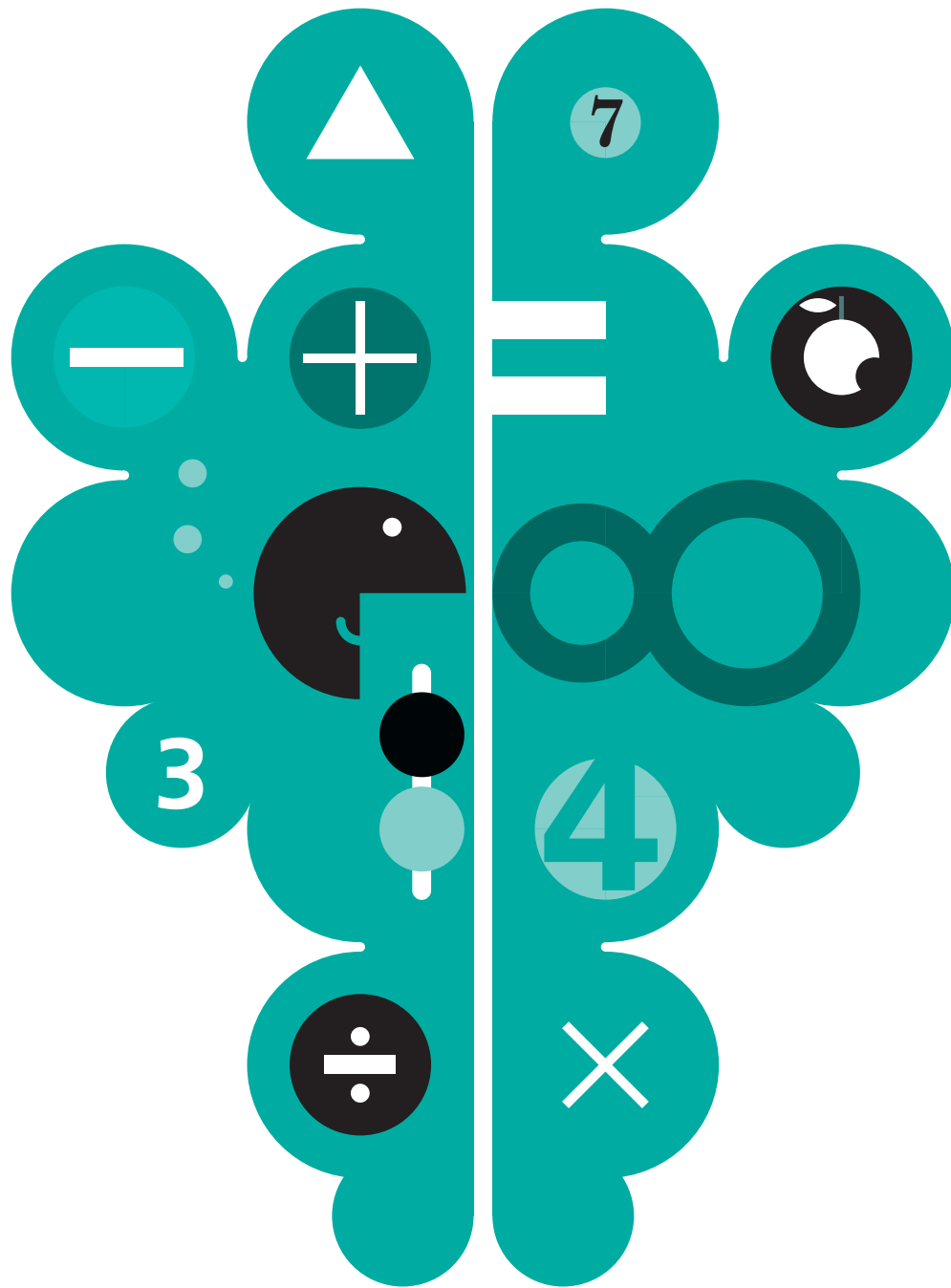


# First Mental Arithmetic 6

## Answers

Name \_\_\_\_\_



# Section 1 Session 1

## Session Focus

Read and write numbers beyond 100 in digits and words  
Sequences of numbers

**A**

ANSWER

Write these numbers in digits.

1 Two hundred and thirty-six

236

2 Four hundred and nine

409

3 Seven hundred and ninety

790

4 Eight hundred and eighty-eight

888

5 One hundred and four

104

Write the missing numbers.

6 21 23 25 27

29

7 32 34 36 38

40

8 16 26 36 46

56

9 15 20 25 30

35

10 6 9 12 15

18

**B**

ANSWER

Write these numbers as words.

1 246

two hundred and forty-six

2 550

five hundred and fifty

3 907

nine hundred and seven

4 970

nine hundred and seventy

5 444

four hundred and forty-four

Start at

6 59. Count back 3 tens.

29

7 44. Count on 4 tens.

84

8 93. Count back 3 ones.

90

9 42. Count on 8 twos.

58

10 19. Count on 7 tens.

89

**C**

ANSWER

What is the

1 tens digit in 432?

3

2 hundreds digit in 927?

9

3 ones digit in 357?

7

Write

4 one more than 899 in words.

nine hundred

5 one less than 650 in words.

six hundred and forty-nine

Here are some numbers.

36 38 40 42

Write the number that comes

6 next.

44

7 before 36.

34

8 two places before 36.

32

9 three places after 42.

48

10 ten places after 42.

62

# Section 1 Session 2

## Session Focus

Order two-digit numbers and position them on a number line  
Use symbols < and >

**A**

ANSWER

Use < or > to make these number sentences true.

1 54  65

<

2 92  45

>

3 45  54

<

4 36g  63g

<

5 92g  29g

>

Write the number where it belongs on the number line.



**B**

ANSWER

Use each number in the list just once to answer the questions.

35 92 36 45 60

1 45 <

60

2 92 >

45

3  < 36

35

4 44 >

36

5  > 60

92

Write the missing numbers.

6 45 46 47

48

7 32  36 38

34

8 91 90  88

89

9 12  32 42

22

10 61 63  67

65

**C**

ANSWER

What number is

1 1 greater than 45?

46

2 10 less than 45?

35

3 5 less than 67?

62

4 3 more than 67?

70

5 10 more than 89?

99

6 2 more than 98?

100

Here is Oliver's homework.

Has he used the correct symbols?

Tick the correct answers.

Write the correct symbol if Oliver is wrong.

7 36 < 45

✓

8 45 < 42

>

9 64ml > 46ml

✓

10 92ml > 93ml

<

# Section 1 Session 3

## Session Focus

Add and subtract a two-digit number and a one-digit number

**A**

ANSWER

1  $19 + 1 = 20$

2  $16 + 5 = 21$

3  $7 + 11 = 18$

4  $18 + 7 = 25$

5  $13 + 9 = 22$

6  $19 - 8 = 11$

7  $13 - 7 = 6$

8  $21 - 8 = 13$

9  $32 - 4 = 28$

10  $25 - 6 = 19$

**B**

ANSWER

1  $\square + 5 = 21$       16

2  $\square + 17 = 21$       4

3  $13 + \square = 22$       9

4  $16 + \square = 23$       7

5  $\square + 16 = 24$       8

6  $23 - \square = 17$       6

7  $26 - \square = 17$       9

8  $\square - 5 = 28$       33

9  $\square - 7 = 42$       49

10  $\square - 6 = 44$       50

**C**

ANSWER



Write how many are left.

1 Tom eats 8 grapes.      26

2 Zehra eats 5 raisins.      22

3 Lucas eats 9 sultanas.      29

4 Adam eats another 7 grapes.      19

5 Niamh eats another 6 raisins.      16

6 Sam eats another 9 sultanas.      20

How many

7 grapes have been eaten altogether?      15

8 raisins have been eaten altogether?      11

9 sultanas have been eaten altogether?      18

10 fruits have been eaten in total?      44

# Section 1 Session 4

## Session Focus

Add and subtract a two-digit number and a one-digit number

### A ANSWER

1  $14 + \begin{matrix} \bullet & \bullet & \bullet \\ \bullet & \bullet & \bullet \end{matrix} = 21$

2  $23 + \begin{matrix} \bullet & \bullet & \bullet \\ \bullet & \bullet & \bullet \\ \bullet & \bullet & \bullet \end{matrix} = 32$

3  $47 + \begin{matrix} \bullet \\ \bullet & \bullet \\ \bullet & \bullet \end{matrix} = 50$

4  $64 + \begin{matrix} \bullet & \bullet \\ \bullet & \bullet & \bullet \\ \bullet & \bullet \end{matrix} = 69$

5  $88 + \begin{matrix} \bullet & \bullet & \bullet \\ \bullet & \bullet & \bullet \end{matrix} = 94$

6  $17 - 8 = 9$

7  $23 - 4 = 19$

8  $36 - 8 = 28$

9  $56 - 9 = 47$

10  $32 - 4 = 28$

### B ANSWER

1  $44 + 7 = 51$

2  $56 + 4 = 60$

3  $64 - 9 = 55$

4  $72 - 8 = 64$

5  $37 + 4 = 41$

6  $97 + 3 = 100$

7  $65 - 8 = 57$

8  $21 - 9 = 12$

9  $55 + 7 = 62$

10  $55 - 6 = 49$

### C ANSWER

1 The difference between 72 and 3 is 69

2 How many more is 91 than 88? 3

3 How many fewer is 36 than 40? 4

What is the change from 50p?



4 Spend 6p. 44p

5 Spend 7p. 43p

Total

6 46p and 5p. 51p

7 72p and 9p. 81p

How much

8 less is 7p than 45p? 38p

9 more is 44p than 35p? 9p

10 What is the sum of 78p and 5p? 83p

# Section 1 Session 5

**Session Focus**  
Add and subtract two two-digit numbers

**A**

ANSWER

1  $50 + 12 = 62$

2  $13 + 40 = 53$

3  $64 + 20 = 84$

4  $31 + 50 = 81$

5  $73 + 20 = 93$

6  $91 - 10 = 81$

7  $82 - 41 = 41$

8  $64 - 34 = 30$

9  $45 - 42 = 3$

10  $62 - 31 = 31$

**B**

ANSWER

1  $54 + \square = 70$       16

2  $50 + \square = 62$       12

3  $84 - \square = 70$       14

4  $92 - \square = 71$       21

5  $38 + \square = 56$       18

6  $24 - \square = 4$       20

7  $39 + \square = 81$       42

8  $63 + \square = 97$       34

9  $\square + 26 = 49$       23

10  $\square - 73 = 16$       89

**C**

ANSWER

How much is

1  $32\text{p}$  and  $50\text{p}$ ?      82p

2  $80\text{p}$  and  $13\text{p}$ ?      93p

What is left from

3  $£95$  if you spend  $£45$ ?      £50

4  $£90$  if you spend  $£72$ ?      £18



Find the total.

5  $40\text{cm}$  and  $36\text{cm}$ .      76cm

6  $54\text{cm}$  and  $30\text{cm}$ .      84cm

7  $73\text{cm}$  and  $25\text{cm}$ .      98cm

8  $54\text{ml}$  and  $45\text{ml}$ .      99ml

9 Subtract  $80\text{g}$  from  $95\text{g}$ .      15g

10 What is the difference between  $80\text{g}$  and  $65\text{g}$ ?      15g

# Section 1 Session 6

Session Focus  
Addition and subtraction for numbers to 20

## A ANSWER

1  $11 + \begin{matrix} \bullet & \bullet & \bullet \\ \bullet & \bullet & \bullet \\ \bullet & \bullet & \bullet \end{matrix} = \boxed{20}$

2  $12 + \square = 20$   $\boxed{8}$

3  $15 + \square = 20$   $\boxed{5}$

4  $\square + 1 = 20$   $\boxed{19}$

5  $\square + 13 = 20$   $\boxed{7}$

6  $20 - \begin{matrix} \bullet & \bullet & \bullet \\ \bullet & \bullet & \bullet \\ \bullet & \bullet & \bullet \end{matrix} = \boxed{13}$

7  $20 - 18 = \boxed{2}$

8  $20 - 15 = \boxed{5}$

9  $20 - \square = 14$   $\boxed{6}$

10  $20 - \square = 8$   $\boxed{12}$

## B ANSWER

1  $20 = 13 + \square$   $\boxed{7}$

2  $20 = \square + 9$   $\boxed{11}$

3  $20 = 16 + \square$   $\boxed{4}$

4  $20 = 11 + \square$   $\boxed{9}$

5  $20 = \square + 17$   $\boxed{3}$

6  $20 = \square + 14$   $\boxed{6}$

7  $20 = 5 + \square$   $\boxed{15}$

8  $20 = 19 + \square$   $\boxed{1}$

9  $20 = 2 + \square$   $\boxed{18}$

10  $20 = 10 + \square$   $\boxed{10}$

## C ANSWER



What is the change from **20p** if you spend

1 **7p?**  $\boxed{13p}$

2 **14p?**  $\boxed{6p}$

3 **18p?**  $\boxed{2p}$

4 **11p?**  $\boxed{9p}$

5 **16p?**  $\boxed{4p}$

6 **3p?**  $\boxed{17p}$

7 **8p?**  $\boxed{12p}$

8 **1p?**  $\boxed{19p}$

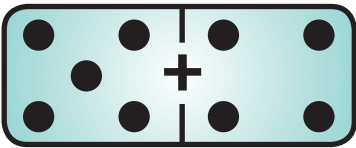
9 **4p?**  $\boxed{16p}$

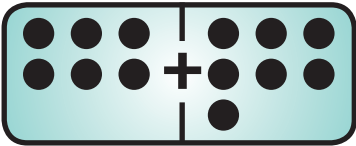
10 **nothing?**  $\boxed{20p}$

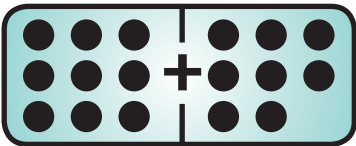
# Section 1 Session 7

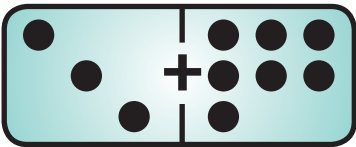
**Session Focus**  
Addition and subtraction for numbers to 20

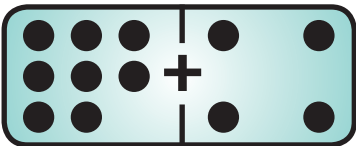
## A ANSWER

1  =

2  =

3  =

4  =

5  =

6  $12 - 7 =$

7  $14 - 8 =$

8  $15 - 6 =$

9  $19 - 10 =$

10  $13 - 5 =$

## B ANSWER

1  $4 + \square = 12$

2  $7 + \square = 15$

3  $8 + \square = 11$

4  $\square + 4 = 13$

5  $\square + 9 = 15$

6  $13 - \square = 6$

7  $15 - \square = 8$

8  $\square - 6 = 7$

9  $\square - 3 = 9$

10  $16 - \square = 9$

## C ANSWER

What is the total?

1 6 boys and 8 girls.

2 9 oranges and 10 apples.

3 3 girls and another 8 girls.

4 5 dogs and 7 cats.

5 5 cars and 6 bikes.

How many now? There are

6 15 jam tarts and 8 are eaten.

7 19 muffins and 10 are eaten.

8 14 boys and 6 go home.

9 17 parrots and 8 fly away.

10 14 kangaroos and 5 jump away.



# Section 1 Session 8

Session Focus  
Addition and subtraction for numbers to 20

## A ANSWER

1  $15 + \bullet \bullet \bullet \bullet = 20$

2  $13 + \square = 20$       7

3  $19 + \square = 20$       1

4  $\square + 16 = 20$       4

5  $\square + 9 = 20$       11

6  $20 - \bullet \bullet \bullet = 17$

7  $20 - \bullet \bullet \bullet \bullet \bullet \bullet = 12$

8  $20 - \bullet \bullet \bullet \bullet = 16$

9  $20 - \bullet \bullet \bullet \bullet \bullet \bullet \bullet = 13$

10  $20 - 14 = 6$

## B ANSWER

1 20 subtract 8 is 12

2 20 subtract 4 is 16

3 20 subtract 9 is 11

4  $\square$  add 5 makes 20. 15

5  $\square$  and 7 equals 20. 13

6  $\square$  add 3 equals 20. 17

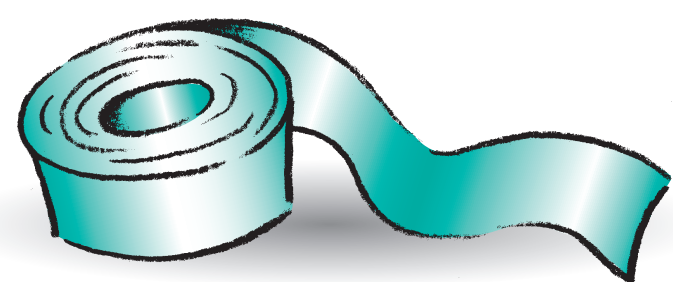
7 20 take away 6 is 14

8 20 minus 2 is 18

9 1 and  $\square$  equals 20. 19

10 18 and  $\square$  equals 20. 2

## C ANSWER



Write how much is left from 20cm of tape when you cut off

1 4cm. 16cm

2 9cm. 11cm

3 8cm. 12cm

4 13cm. 7cm

5 11cm. 9cm

6 5cm. 15cm

7 14cm. 6cm

8 2cm. 18cm

9 7cm. 13cm

10 19cm. 1cm

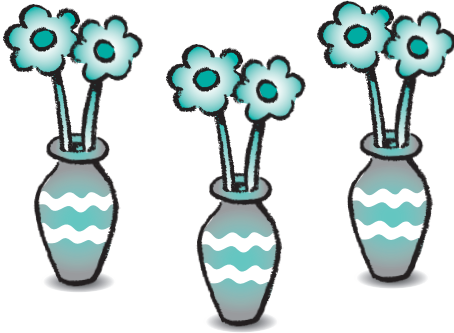
# Section 1 Session 9

Session Focus  
Multiplication and division facts for 2s

## A ANSWER

1  $10 \times 2 = 20$

2  $8 \times 2 = 16$



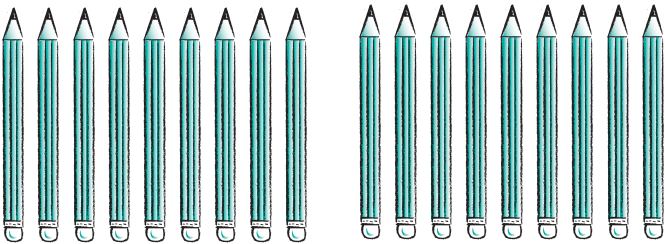
3  $3 \times 2 = 6$

4  $5 \times 2 = 10$

5  $7 \times 2 = 14$

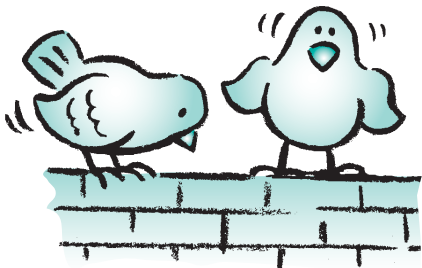
6  $4 \times 2 = 8$

7  $6 \times 2 = 12$



8  $9 \times 2 = 18$

9  $1 \times 2 = 2$



10  $2 \times 2 = 4$

## B ANSWER

1  $14 \div 2 = 7$

2  $18 \div 2 = 9$

3  $6 \div 2 = 3$

4  $12 \div 2 = 6$

5  $16 \div 2 = 8$

6  $4 \div 2 = 2$

7  $20 \div 2 = 10$

8  $2 \div 2 = 1$

9  $8 \div 2 = 4$

10  $10 \div 2 = 5$

## C ANSWER

1  $\square \times 2 = 4$       2

2  $\square \div 2 = 8$       16

3  $\square \times 2 = 10$       5

4  $\square \div 2 = 10$       20

5  $\square \times 2 = 14$       7

6  $\square \div 2 = 6$       12

7  $\square \times 2 = 20$       10

8  $\square \div 2 = 5$       10

9  $\square \times 2 = 18$       9

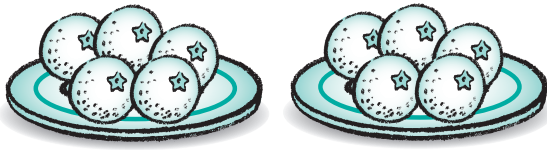
10  $\square \div 2 = 7$       14

# Section 1 Session 10

Session Focus  
Multiplication and division facts for 2s

**A**

ANSWER



1  $5 \times 2 = 10$

2  $7 \times 2 = 14$

3  $9 \times 2 = 18$

4  $6 \times 2 = 12$

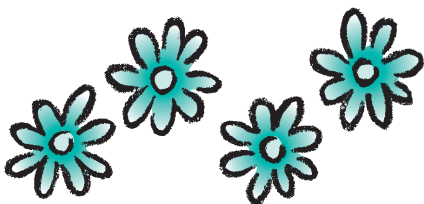
5  $3 \times 2 = 6$

6  $16 \div 2 = 8$



7  $20 \div 2 = 10$

8  $12 \div 2 = 6$



9  $4 \div 2 = 2$

10  $14 \div 2 = 7$

**B**

ANSWER

What is

1 7 times 2?  $14$

2 8 divided by 2?  $4$

3 12 shared by 2?  $6$

4 4 multiplied by 2?  $8$

5 the product of 9 and 2?  $18$

6 6 divided by 2?  $3$

7 6 multiplied by 2?  $12$

8 4 divided by 2?  $2$

9 16 divided by 2?  $8$

10 the product of 5 and 2?  $10$

**C**

ANSWER

Write the answers.

1 20 cupcakes shared between 2 plates.  $10$

2 18 plums divided into 2 piles.  $9$

3 16 apricots shared between 2 bowls.  $8$

4 2 plates with 6 cookies each.  $12$

5 2 plates with 8 brownies each.  $16$

6 14 sausages shared between 2 plates.  $7$

7 2 plates with 4 potatoes each.  $8$

8 2 bags with 10 oranges each.  $20$

9 2 bags with 5 pears each.  $10$

10 10 apples divided into 2 piles.  $5$

# Section 1 Session 11

## Session Focus

Read and write numbers beyond 100 in digits and words. Sequences of numbers. Order two-digit numbers and position them on a number line. Use symbols  $<$  and  $>$ . Add and subtract a two-digit number and a one-digit number.

### A ANSWER

Write in digits.


1 Six hundred and two 602

2 Four hundred and twenty 420


3 15 25 35 45 55

4 98 96 94 92 90

5 Write 36 on the number line.



6 Write 64 on the number line.



Write  $<$  or  $>$ .

7 72 > 27

8 23 < 32

9  $56 + 4 =$  60

10  $63 - 4 =$  59

### B ANSWER

Write in words.

1 654  
six hundred and fifty-four

2 903  
nine hundred and three

Where do you land if you make

3 5 jumps of 2 from 20? 30

4 6 jumps of 5 from 15? 45

5 Which is larger, 64 or 67? 67

6 Which is smaller, 56 or 65? 56

Use 43 or 34 to answer these two questions.

7  $35 >$  34

8 43  $< 53$

9 Add 47 and 8. 55

10 What is the difference between 46 and 8? 38

### C ANSWER

What is the number

1 after 799? 800

2 before 600? 599

3 Start on 18.  
Jump 3 fives. 33

4 Start on 64.  
Jump back 4 tens. 24

5 89, 90, 91

6 62, 60, 58

7 Which is larger, 64 or 65? 65

8 Which is smaller, 94 or 49? 49

9 64 roses and 7 daisies total 71

10 There were 72 marbles  
and 5 rolled away.  
How many were left? 67

# Section 1 Session 12

## Session Focus

Add and subtract two two-digit numbers  
Addition and subtraction for numbers to 20  
Multiplication and division facts for 2s

**A**

ANSWER

1  $23 + 11 = 34$

2  $36 - 12 = 24$

3  $94 - 13 = 81$

4  $16 + \square = 20$       4

5  $\square + 3 = 20$       17

6  $8 + \square = 20$       12

7  $5 + 4 = 9$

8  $9 + 1 = 10$

9  $4 \times 2 = 8$

10  $8 \times 2 = 16$

**B**

ANSWER

1 19 add 14.      33

2  $87 - 26 = 61$

3  $43 + 36 = 79$

4  $\square + 9 = 20$       11

5 20 take away 5.      15

6 20 subtract 14.      6

7  $3 + \square = 10$       7

8  $8 - 5 = 3$

9  $7 \times 2 = 14$

10  $18 \div 2 = 9$

**C**

ANSWER

What is

1 forty-eight add eleven?

fifty-nine

2 eighty-six subtract fifteen?

seventy-one

3 thirty-two subtract thirteen?

nineteen



What is the change from **20p** if you spend

4 **8p?**

12p

5 **9p?**

11p

6 What is the change from **10p** if you spend **8p?**

2p

How much is

7 **6p** add **3p?**

9p

8 two lots of **9p?**

18p

9 **16p** shared by **2?**

8p

10 **10p** shared by **2?**

5p

# Section 2 Group Record Sheet

Class \_\_\_\_\_

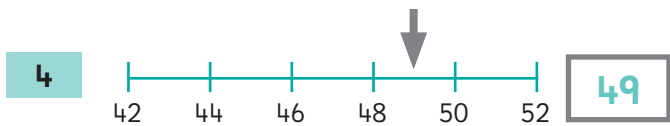
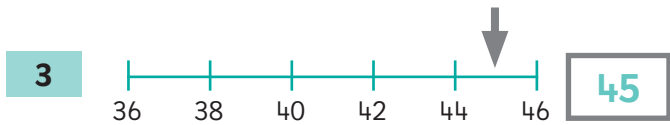
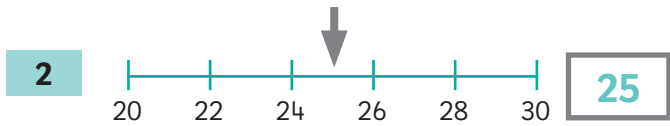
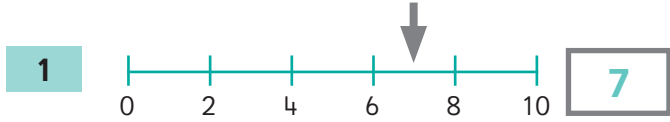
Name	Read numbers on scales marked in 2s and 5s Sessions 1 and 2	Multiplication and division facts for 5s Sessions 1 and 2	Missing number sentences for addition and subtraction Session 3	Pairs to total 20 Session 3	Pairs of multiples of 10 to make 100 Session 7	Doubles of all numbers to 20 and matching halves Session 7

# Section 2 Session 1

**Session Focus**  
Read numbers on scales marked in 2s  
Multiplication facts for 5s

## A ANSWER

Write the number where the arrow points.



5  $10 \times 5 =$  50

6  $6 \times 5 =$  30

7  $3 \times 5 =$  15

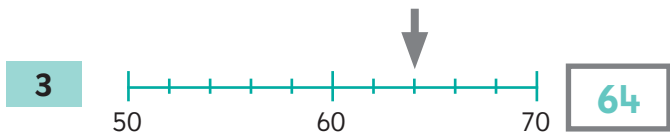
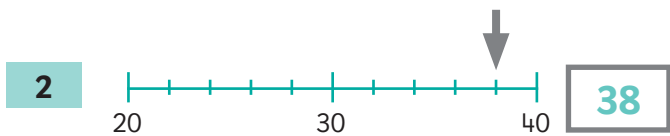
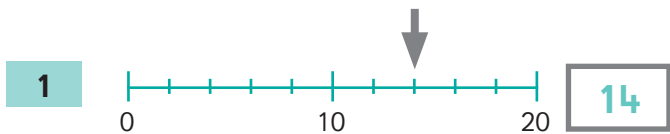
8  $8 \times 5 =$  40

9  $7 \times 5 =$  35

10  $1 \times 5 =$  5

## B ANSWER

Write the number where the arrow points.



What is

4 4 multiplied by 5? 20

5 9 multiplied by 5? 45

6 5 lots of 4? 20

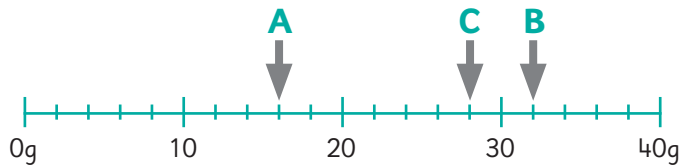
7 1 times 5? 5

8 10 multiplied by 5? 50

9 2 times 5? 10

10 5 multiplied by 5? 25

## C ANSWER



1 Arrow A points to 16g

2 Arrow B points to 32g

3 Arrow C points to 28g



How many apples in

4 6 packs? 30

5 8 packs? 40

6 10 packs? 50

7 4 packs? 20

8 2 packs? 10

9 7 packs? 35

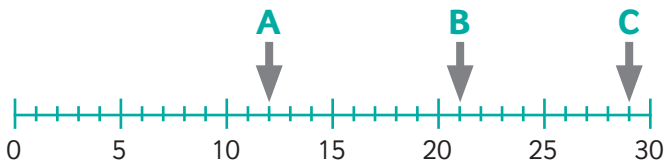
10 9 packs? 45

# Section 2 Session 2

**Session Focus**  
Read numbers on scales marked in 5s  
Division facts for 5s

## A ANSWER

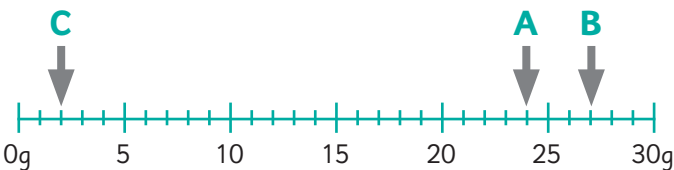
For questions 1 to 3, write the number that the arrow points to.



- 1 A 12
- 2 B 21
- 3 C 29
- 4  $15 \div 5 =$  3
- 5  $45 \div 5 =$  9
- 6  $30 \div 5 =$  6
- 7  $20 \div 5 =$  4
- 8  $10 \div 5 =$  2
- 9  $35 \div 5 =$  7
- 10  $5 \div 5 =$  1

## B ANSWER

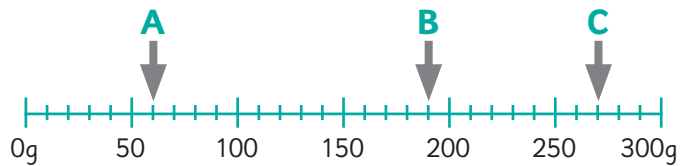
For questions 1 to 3, write the number that the arrow points to.



- 1 A 24g
- 2 B 27g
- 3 C 2g
- 4  $25 \div 5 =$  5
- 5  $\square \div 5 = 4$  20

- 6  $\square \div 5 = 6$  30
- 7  $\square \div 5 = 9$  45
- 8  $\square \div 5 = 1$  5
- 9  $35 \div 5 =$  7
- 10  $40 \div 5 =$  8

## C ANSWER



Write how many grams the arrow points to.

- 1 A 60g
- 2 B 190g
- 3 C 270g

Write how many on each plate.

- 4 50 peaches shared between 5 plates. 10
- 5 35 peaches shared between 5 plates. 7
- 6 20 peaches shared between 5 plates. 4
- 7 10 peaches shared between 5 plates. 2
- 8 15 peaches shared between 5 plates. 3
- 9 45 peaches shared between 5 plates. 9
- 10 30 peaches shared between 5 plates. 6



# Section 2 Session 3

**Session Focus**  
Missing number sentences for addition and subtraction  
Pairs to total 20

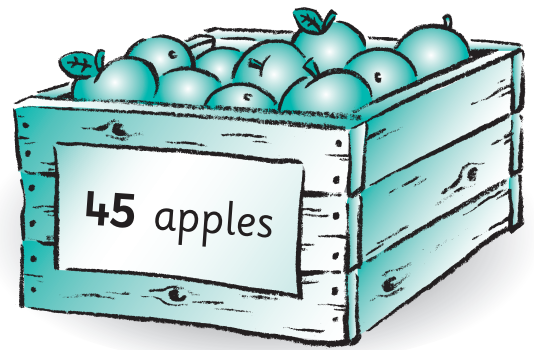
## A ANSWER

- |    |                     |    |
|----|---------------------|----|
| 1  | $\square + 5 = 8$   | 3  |
| 2  | $9 + \square = 14$  | 5  |
| 3  | $16 + \square = 23$ | 7  |
| 4  | $24 + \square = 32$ | 8  |
| 5  | $37 + \square = 46$ | 9  |
| 6  | $5 + \square = 20$  | 15 |
| 7  | $19 + \square = 20$ | 1  |
| 8  | $13 + \square = 20$ | 7  |
| 9  | $8 + \square = 20$  | 12 |
| 10 | $4 + \square = 20$  | 16 |

## B ANSWER

- |    |                     |    |
|----|---------------------|----|
| 1  | $42 - \square = 38$ | 4  |
| 2  | $63 - \square = 59$ | 4  |
| 3  | $71 - \square = 62$ | 9  |
| 4  | $84 - \square = 78$ | 6  |
| 5  | $\square - 7 = 63$  | 70 |
| 6  | $20 - 14 = \square$ | 6  |
| 7  | $20 - 18 = \square$ | 2  |
| 8  | $20 - 9 = \square$  | 11 |
| 9  | $20 - \square = 17$ | 3  |
| 10 | $20 - \square = 16$ | 4  |

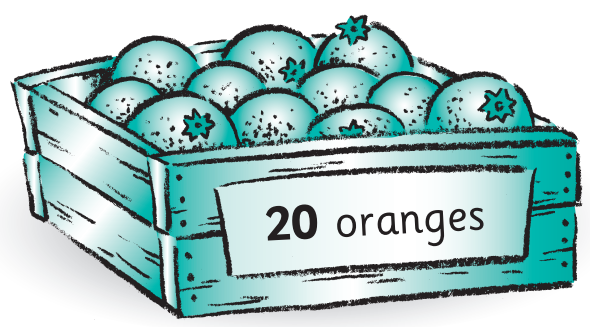
## C ANSWER



You have **45** apples.

Write how many are left when you sell

- |   |                   |    |
|---|-------------------|----|
| 1 | 5 apples.         | 40 |
| 2 | another 6 apples. | 34 |
| 3 | another 9 apples. | 25 |
| 4 | another 8 apples. | 17 |
| 5 | another 7 apples. | 10 |



You have **20** oranges.

Write how many are left when you sell

- |    |     |    |
|----|-----|----|
| 6  | 6.  | 14 |
| 7  | 9.  | 11 |
| 8  | 14. | 6  |
| 9  | 19. | 1  |
| 10 | 0.  | 20 |

# Section 2 Session 4

**Session Focus**  
Missing number sentences for addition and subtraction  
Pairs to total 20

## A ANSWER

1  $9 + \bullet\bullet\bullet = 13$

2  $16 + \square = 23$       7

3  $24 + \square = 32$       8

4  $\square + 7 = 54$       47

5  $\square + 9 = 51$       42

6  $19 + \bullet = 20$

7  $16 + \square = 20$       4

8  $3 + \square = 20$       17

9  $\square + 8 = 20$       12

10  $\square + 2 = 20$       18

## B ANSWER

1  $36 - \square = 29$       7

2  $45 - \square = 37$       8

3  $94 - 7 = \square$       87

4  $\square - 2 = 89$       91

5  $\square - 7 = 63$       70

6  $20 - \square = 15$       5

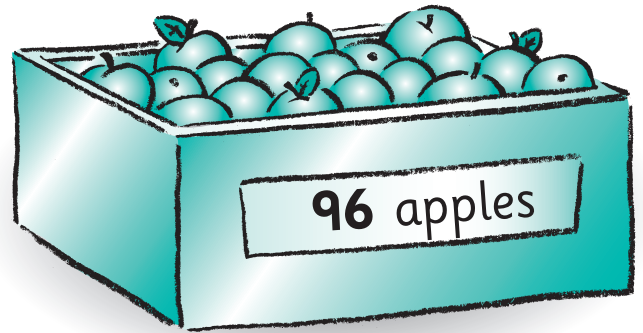
7  $20 - 9 = \square$       11

8  $20 - \square = 14$       6

9  $20 - \square = 0$       20

10  $20 - \square = 2$       18

## C ANSWER



Write each time how many apples are left when you

1 take away 8 apples.      88

2 eat another 3 apples.      85

3 sell another 9 apples.      76

4 give away another 7 apples.      69

5 sell another 6 apples.      63

Write how many are left when you have

6 20 apples and eat 6.      14

7 20 oranges and sell 13.      7

8 20 bananas and eat 2.      18

9 20 pears but 5 are bad.      15

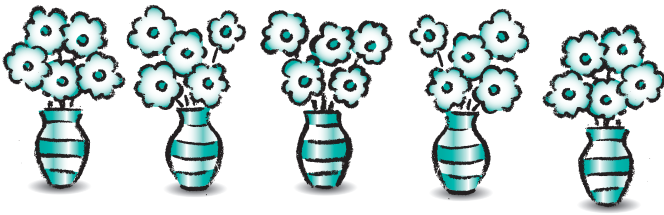
10 20 mangoes and sell 4.      16

# Section 2 Session 5

Session Focus  
Multiplication and division facts for 5s

**A**

ANSWER



1  $5 \times 5 = 25$

2  $7 \times 5 = 35$



3  $3 \times 5 = 15$

4  $6 \times 5 = 30$

5  $10 \times 5 = 50$

6  $20 \div 5 = 4$

7  $15 \div 5 = 3$

8  $10 \div 5 = 2$

9  $25 \div 5 = 5$

10  $40 \div 5 = 8$

**B**

ANSWER

What is

1 6 multiplied by 5?  $30$

2 8 multiplied by 5?  $40$

3 4 times 5?  $20$

4 9 times 5?  $45$

5 5 lots of 10?  $50$

6 30 divided by 5?  $6$

7 40 divided by 5?  $8$

8 5 shared by 5?  $1$

9 35 shared by 5?  $7$

10 15 shared by 5?  $3$

**C**

ANSWER

Write the answer.

1 25 apricots shared between 5 bowls.  $5$

2 9 boxes of 5 doughnuts.  $45$

3 50 waffles shared between 5 plates.  $10$

4 6 boxes of 5 scones.  $30$

5 35 grapes shared between 5 children.  $7$

6 20 cherries shared between 5 children.  $4$

Write these as multiplication or division sentences and then write the answers.

7 5 packs of 5 mangoes.  $5 \times 5 = 25$

8 3 bags of 5 kiwi fruits.  $3 \times 5 = 15$

9 40 cherries shared between 5 bowls.  $40 \div 5 = 8$

10 10 melons shared between 5 people.  $10 \div 5 = 2$

# Section 2 Session 6

Session Focus  
Multiplication and division facts for 5s

**A**

ANSWER

1  $9 \times 5p = 45p$

2  $3 \times 5p = 15p$

3  $2 \times 5p = 10p$

4  $8 \times 5p = 40p$

5  $10 \times 5p = 50p$

6  $7 \times 5p = 35p$

7  $6 \times 5p = 30p$

8  $1 \times 5p = 5p$

9  $4 \times 5p = 20p$

10  $5 \times 5p = 25p$

**B**

ANSWER

1  $35 \div 5 = 7$

2  $20 \div 5 = 4$

3  $50 \div 5 = 10$

4  $10 \div 5 = 2$

5  $40 \div 5 = 8$

6  $15 \div 5 = 3$

7  $25 \div 5 = 5$

8  $45 \div 5 = 9$

9  $30 \div 5 = 6$

10  $5 \div 5 = 1$

**C**

ANSWER

1 How many fives in 40? **8**

2 How many fives in 25? **5**

3 What is 7 times 5? **35**

4 What is 5 lots of 8? **40**

5 How many fives in 50? **10**

6 How many fives in 35? **7**

7 What is 9 times 5? **45**

8 What is 3 multiplied by 5? **15**

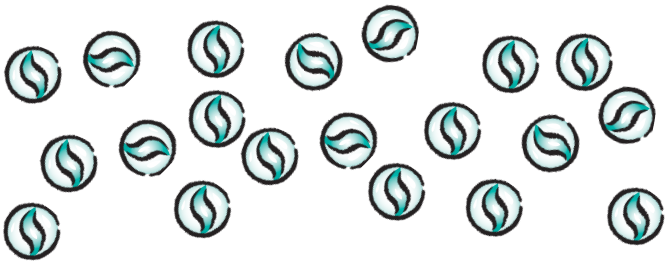
9 What is 6 multiplied by 5? **30**

10 How many fives in 15? **3**

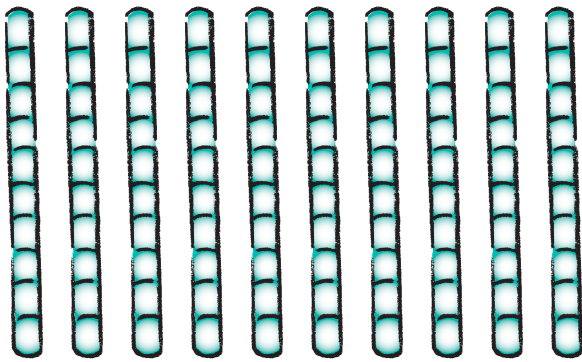
# Section 2 Session 7

**Session Focus**  
 Pairs to total 20  
 Pairs of multiples of 10 to make 100  
 Doubles of all numbers to 20 and matching halves

## A ANSWER



- 1  $19 + \square = 20$  1
- 2  $\square + 7 = 20$  13
- 3  $6 + \square = 20$  14



- 4  $30 + 70 = \square$  100
- 5  $10 + \square = 100$  90
- 6  $50 + \square = 100$  50
- 7  $14 + 14 = \square$  28
- 8  $20 + 20 = \square$  40
- 9  $16 + 16 = \square$  32
- 10  $13 + 13 = \square$  26

## B ANSWER

- 1  $20 - \square = 12$  8
- 2  $20 - \square = 2$  18

- 3  $20 - \square = 3$  17
- 4  $100 - \square = 30$  70
- 5  $100 - \square = 60$  40
- 6  $100 - \square = 20$  80

What is half of

- 7 30? 15
- 8 28? 14
- 9 36? 18
- 10 38? 19

## C ANSWER

- 1 You have 16.  
How many more to make 20? 4
- 2 Add  $\square$  to 17 to make 20. 3
- 3 1 and  $\square$  makes 20. 19
- 4 Add  $\square$  to 30 to total 100. 70
- 5 Subtract  $\square$  from 100 to leave 20. 80
- 6 Subtract  $\square$  from 100 to leave nothing. 100
- 7 Share 34 between 2. 17
- 8 Share 26 between 2. 13
- 9 Share 24 between 2. 12
- 10 Share 30 between 2. 15

# Section 2 Session 8

## Session Focus

Pairs of multiples of 10 to make 100  
Doubles of all numbers to 20 and matching halves

**A**

ANSWER

1  $20 + \square = 100$

80

2  $60 + \square = 100$

40

3  $\square + 90 = 100$

10

4  $\square + 40 = 100$

60

5  $\square + 30 = 100$

70

What is double

6 15?

30

7 19?

38

8 11?

22

9 17?

34

10 16?

32

**B**

ANSWER

1  $100 - 80 =$

20

2  $100 - 40 =$

60

3  $100 - 50 =$

50

4  $100 - 70 =$

30

5  $100 - 10 =$

90

What is half of

6 40?

20

7 36?

18

8 28?

14

9 32?

16

10 22?

11

**C**

ANSWER

Write how many eggs are left if you have 100 eggs and sell

1 40.

60

2 70.

30

3 50.

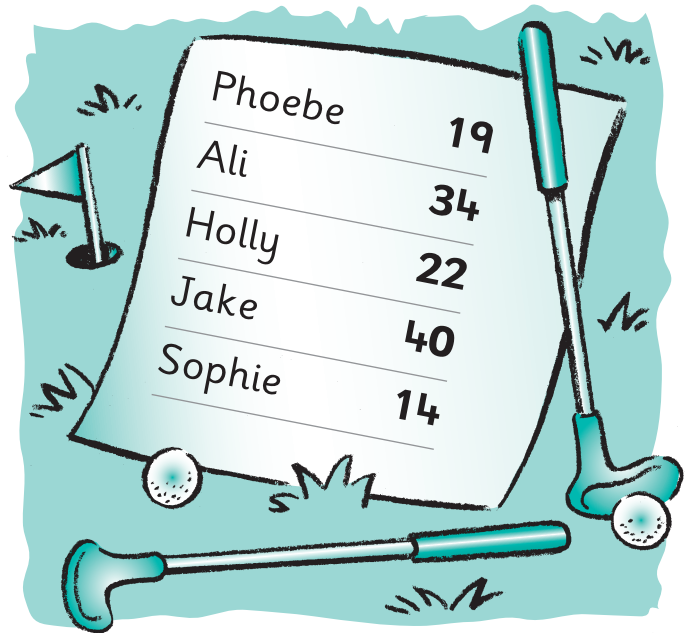
50

4 80.

20

5 10.

90



What is

6 double Phoebe's score?

38

7 half of Ali's score?

17

8  $\frac{1}{2}$  of Holly's score?

11

9  $\frac{2}{4}$  of Jake's score?

20

10 double Sophie's score?

28

# Section 2 Session 9

## Session Focus

Pairs of multiples of 10 to make 100  
Doubles of all numbers to 20 and matching halves

**A** ANSWER **C** ANSWER

- 1  $20 + \square = 100$  80
- 2  $30 + \square = 100$  70
- 3  $60 + \square = 100$  40
- 4  $\square + 70 = 100$  30
- 5  $\square + 90 = 100$  10

What is double

- 6 19? 38
- 7 14? 28
- 8 17? 34
- 9 18? 36
- 10 12? 24

**B** ANSWER

- 1 Add  $\square$  to 30 to make 100. 70
- 2 Add  $\square$  to 90 to make 100. 10
- 3 Add  $\square$  to 50 to make 100. 50
- 4 100 subtract  $\square$  leaves 20. 80
- 5 100 subtract  $\square$  leaves 40. 60

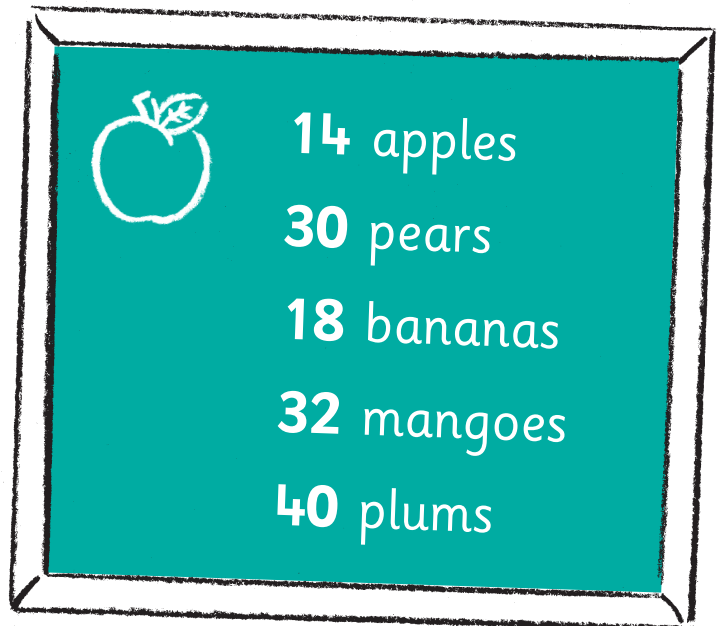
What is half of

- 6 38? 19
- 7 26? 13
- 8 32? 16
- 9 20? 10
- 10 34? 17

You have **100** oranges.

How many are left if you sell

- 1 40? 60
- 2 70? 30
- 3 20? 80
- 4 30? 70
- 5 10? 90



How many is

- 6 double the apples? 28
- 7 half of the pears? 15
- 8 double the bananas? 36
- 9  $\frac{1}{2}$  of the mangoes? 16
- 10  $\frac{2}{4}$  of the plums? 20

# Section 2 Session 10

**Session Focus**  
Multiplication and division facts for 5s

## A ANSWER



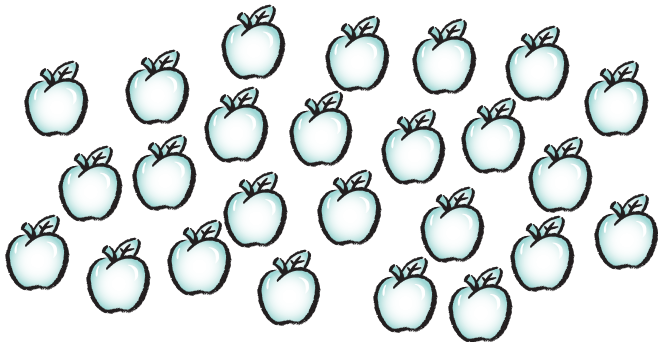
1  $6 \times 5 = 30$

2  $9 \times 5 = 45$

3  $4 \times 5 = 20$

4  $7 \times 5 = 35$

5  $3 \times 5 = 15$



6  $25 \div 5 = 5$

7  $50 \div 5 = 10$

8  $40 \div 5 = 8$

9  $10 \div 5 = 2$

10  $5 \div 5 = 1$

## B ANSWER

What is

1 40 divided by 5? 8

2 10 multiplied by 5? 50

3 6 times 5? 30

4 35 divided by 5? 7

5 5 lots of 2? 10

6 25 divided by 5? 5

7 9 multiplied by 5? 45

8 4 times 5? 20

9 5 shared by 5? 1

10 15 divided by 5? 3

## C ANSWER



How many marbles?

1 9 bags of 5 marbles. 45

2 50 marbles shared by 5. 10

3 35 marbles divided by 5. 7

4 4 bags of 5 marbles. 20

5 8 lots of 5 marbles. 40

6 20 marbles shared between 5. 4

7 10 marbles divided into 5 sets. 2

8 30 marbles shared by 5. 6

9 5 lots of 5 marbles. 25

10 3 bags of 5 marbles. 15

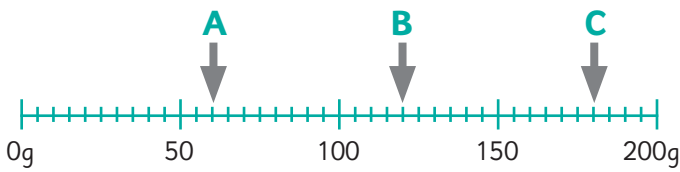


# Section 2 Session 11

## Session Focus

Read numbers on scales marked in 5s  
Multiplication and division facts for 5s  
Missing number sentences for addition and subtraction

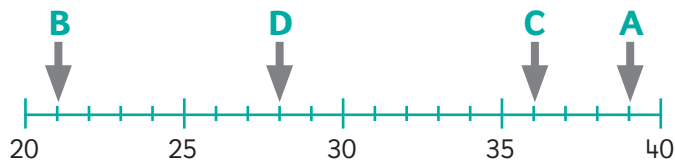
### A ANSWER



For questions 1 to 3, write where the arrow points.

- |    |                     |   |      |
|----|---------------------|---|------|
| 1  | A                   | = | 60g  |
| 2  | B                   | = | 120g |
| 3  | C                   | = | 180g |
| 4  | $5 \times 5$        | = | 25   |
| 5  | $9 \times 5$        | = | 45   |
| 6  | $15 \div 5$         | = | 3    |
| 7  | $30 \div 5$         | = | 6    |
| 8  | $13 + \square = 20$ |   | 7    |
| 9  | $23 - \square = 19$ |   | 4    |
| 10 | $45 + \square = 65$ |   | 20   |

### B ANSWER

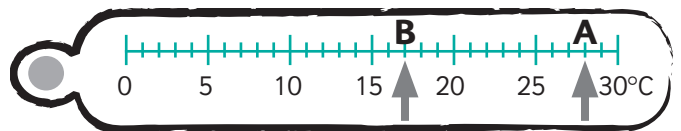


- |   |                           |    |
|---|---------------------------|----|
| 1 | Where does arrow A point? | 39 |
| 2 | Where does arrow B point? | 21 |
| 3 | Where does arrow C point? | 36 |
| 4 | Where does arrow D point? | 28 |
| 5 | Multiply 8 by 5.          | 40 |
| 6 | Divide 50 by 5.           | 10 |

What is

- |    |                    |    |
|----|--------------------|----|
| 7  | 5 lots of 2?       | 10 |
| 8  | 35 divided by 5?   | 7  |
| 9  | $\square + 7 = 43$ | 36 |
| 10 | $\square - 8 = 44$ | 52 |

### C ANSWER



Write where the arrows point.

- |   |   |      |
|---|---|------|
| 1 | A | 28°C |
| 2 | B | 17°C |

How many?

- |   |                                    |    |
|---|------------------------------------|----|
| 3 | 9 boxes of 5 pencils.              | 45 |
| 4 | 4 boxes of 5 pens.                 | 20 |
| 5 | 40 pencils shared between 5 boxes. | 8  |
| 6 | 30 pens shared between 5 boxes.    | 6  |

Take away each time. Write the answer.



- |    |   |    |
|----|---|----|
| 7  | Eat 5 bananas.                          | 49 |
| 8  | Eat 9 more bananas.                     | 40 |
| 9  | 20 bananas then sold.                   | 20 |
| 10 | 16 were left. How many more were eaten? | 4  |

# Section 2 Session 12

**Session Focus**  
 Pairs to total 20  
 Pairs of multiples of 10 to make 100  
 Doubles of all numbers to 20 and matching halves

## A ANSWER

- 1  $15 + \square = 20$  5
- 2  $6 + \square = 20$  14
- 3  $13 + \square = 20$  7
- 4  $60 + \square = 100$  40
- 5  $30 + \square = 100$  70
- 6  $80 + \square = 100$  20
- 7  $14 + 14 = \square$  28
- 8  $19 + 19 = \square$  38
- 9  $13 + 13 = \square$  26
- 10  $15 + 15 = \square$  30

## B ANSWER

- 1  $20 - 14 = \square$  6
- 2  $20 - 8 = \square$  12
- 3  $20 - 19 = \square$  1
- 4  $100 - 30 = \square$  70
- 5  $100 - 10 = \square$  90
- 6  $100 - 80 = \square$  20

What is half of

- 7  $38?$  19
- 8  $26?$  13
- 9  $32?$  16
- 10  $22?$  11

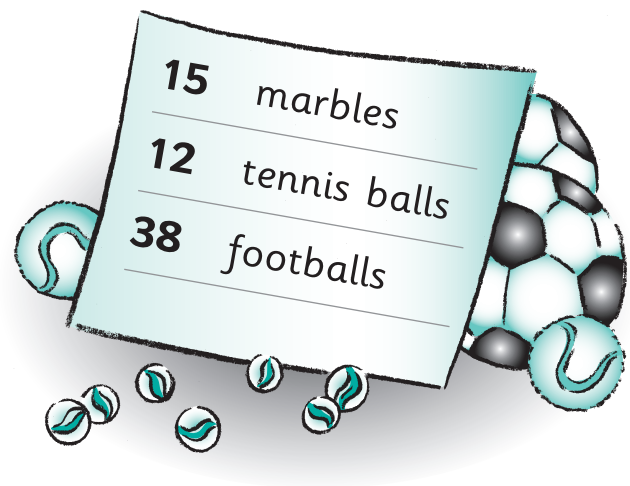
## C ANSWER

How many more to make **20** if you start with

- 1  $16?$  4
- 2  $12?$  8
- 3  $3?$  17

How many more to make **100** if you start with

- 4  $20?$  80
- 5  $90?$  10
- 6  $50?$  50
- 7  $40?$  60



What is double the number of

- 8 marbles? 30
- 9 tennis balls? 24
- 10 What is half the number of footballs? 19

# Section 3 Group Record Sheet

Class \_\_\_\_\_

Name	Halves, quarters, three-quarters and one-third of numbers and shapes Session 1	Time Session 2	Read numbers on scales marked in 5s and 10s Session 3	Multiplication and division facts for 2s, 5s and 10s Session 3	Addition and subtraction Session 6

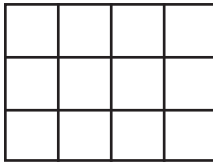
# Section 3 Session 1

## Session Focus

Halves, quarters, three-quarters and one-third of numbers and shapes

**A**

ANSWER



Write how many squares.

- 1 a quarter
- 2 half
- 3 three-quarters
- 4 one third

3

6

9

4

What is

- 5  $\frac{1}{2}$  of 16?
- 6  $\frac{1}{4}$  of 20?
- 7  $\frac{1}{4}$  of 16?
- 8  $\frac{3}{4}$  of 20?
- 9  $\frac{3}{4}$  of 16?
- 10  $\frac{3}{4}$  of 24?

8

5

4

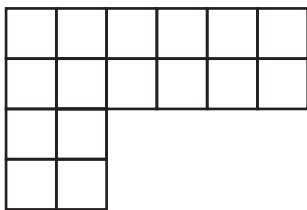
15

12

18

**B**

ANSWER



Write how many squares.

- 1 a quarter
- 2 half
- 3 three-quarters

4

8

12

What is

- 4  $\frac{2}{4}$  of 32?

16

5  $\frac{1}{4}$  of 32?

8

6  $\frac{3}{4}$  of 32?

24

7  $\frac{1}{2}$  of 40?

20

8  $\frac{1}{3}$  of 15?

5

9  $\frac{3}{4}$  of 40?

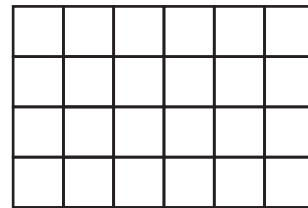
30

10  $\frac{3}{4}$  of 8?

6

**C**

ANSWER



Write how many squares.

- 1 a half
- 2 a quarter
- 3 three-quarters
- 4 a third

12

6

18

8

What is

- 5 a quarter of a bag of 36 cherries?
- 6 three-quarters of a bag of 36 cherries?
- 7 half of a bag of 28 cherries?
- 8 a quarter of a bag of 28 cherries?
- 9 three-quarters of a bag of 28 cherries?
- 10 three-quarters of a bag of 40 cherries?

9

27

14

7

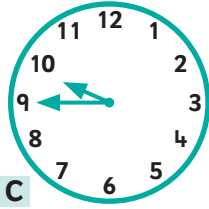
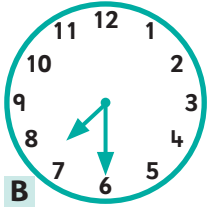
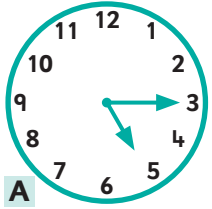
21

30

# Section 3 Session 2

## A ANSWER

Write the time for these clocks.



- 1 **A** 5.15
- 2 **B** 7.30
- 3 **C** 9.45
- 4 How many hours in 1 day? 24
- 5 How many minutes in half an hour? 30

How many minutes between

- 6 **5.00** and **5.15**? 15
- 7 **7.00** and **7.45**? 45

Write the new times. Start with

- 8 clock **A**. Count on **2** hours. 7.15
- 9 clock **B**. Count on **2** hours. 9.30
- 10 clock **C**. Count on **2** hours. 11.45

## B ANSWER

How many

- 1 hours between noon and midnight? 12
- 2 minutes between midnight and **2.00**? 120
- 3 days in a week? 7
- 4 days in a fortnight? 14

Which day comes

- 5 after Wednesday? Thursday

Session Focus  
Time

- 6 before Wednesday? Tuesday

Start at


- 7 **8.45**. What will be the time in **15** minutes? 9.00
- 8 midnight. What will be the time in **1** hour? 1.00

Write the time using numbers.

- 9 half past **8**. 8.30
- 10 a quarter to **11**. 10.45

## C ANSWER

	Bus A	Bus B
Tram Street	9.00	9.15
Town Centre	9.15	9.30



Which bus gets me into town by

- 1 **9.20**? A
- 2 **9.45**? B
- 3 How long does the bus journey take? 15 minutes

What time is

- 4 **3** hours from **9.45**? 12.45
- 5 half an hour after **6.30**? 7.00
- 6 **15** minutes before **6.45**? 6.30
- 7 How many minutes between **8.15** and **8.45**? 30

Write the time if you arrive at

- 8 **9.30** and leave **45** minutes later. 10.15
- 9 **6.15** and leave **2** hours later. 8.15
- 10 **8.45** and leave **30** minutes later. 9.15

# Section 3 Session 3

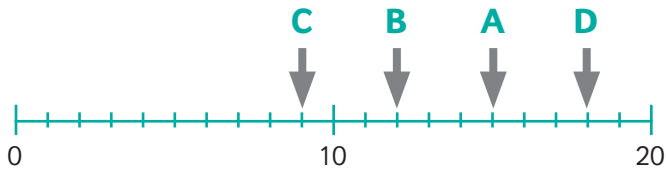
## Session Focus

Read numbers on scales marked in 5s and 10s  
Multiplication and division facts for 2s, 5s and 10s

**A**

ANSWER

Write where the arrow points.



1 A

15

2 B

12

3 C

9

4 D

18

5  $7 \times 5$

=

35

6  $3 \times 5$

=

15

7  $2 \times 2$

=

4

8  $9 \times 10$

=

90

9  $8 \times 2$

=

16

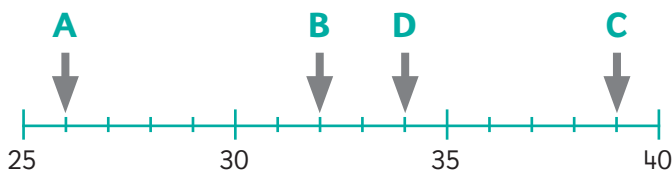
10  $1 \times 10$

=

10

**B**

ANSWER



Write where the arrow points.

1 A

26

2 B

32

3 C

39

4 D

34

5  $40 \div 5$

=

8

6  $18 \div 2$

=

9

7  $30 \div 10$

=

3

8  $30 \div 5$

=

6

9  $80 \div 10$

=

8

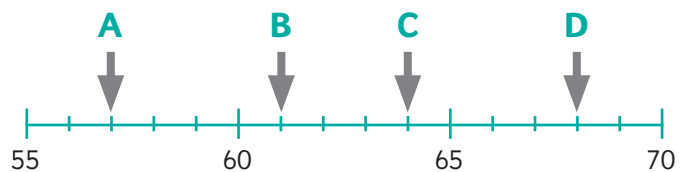
10  $14 \div 2$

=

7

**C**

ANSWER



Write where the arrow points.

1 A

57

2 B

61

3 C

64

4 D

68

How many plums?

5 6 bags of 10 plums.

60

6 70 plums shared between 10.

7

7 18 plums shared between 2.

9

8 2 lots of 8 plums.

16

9 7 bags of 5 plums.

35

10 50 plums shared between 5.

10

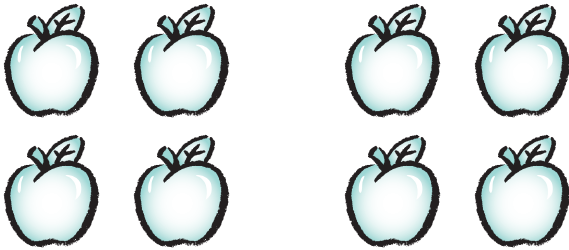
# Section 3 Session 4

## Session Focus

Multiplication and division facts for 2s, 5s and 10s

**A**

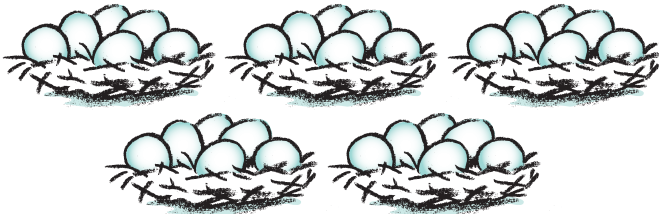
ANSWER



1  $4 \times 2 = 8$

2  $4 \times 5 = 20$

3  $4 \times 10 = 40$



4  $6 \times 5 = 30$

5  $8 \times 10 = 80$

6  $12 \div 2 = 6$

7  $40 \div 5 = 8$

8  $50 \div 10 = 5$

9  $16 \div 2 = 8$

10  $35 \div 5 = 7$

**B**

ANSWER

What is

1  $45$  divided by  $5$ ? 9

2  $4$  multiplied by  $5$ ? 20

3  $14$  divided by  $2$ ? 7

4  $100$  shared by  $10$ ? 10

5 5 lots of  $6$ ? 30

6   $\times 2 = 12$  6

7   $\times 5 = 25$  5

8   $\times 10 = 90$  9

9   $\div 2 = 5$  10

10   $\div 5 = 1$  5

**C**

ANSWER

How many?

1 5 bowls of  $5$  apples. 25

2  $80$  doughnuts put into  $10$  boxes. 8

3  $15$  jellies shared between  $5$  bowls. 3

4  $6$  boxes of  $2$  lightbulbs. 12

5  $10$  boxes of  $5$  notebooks. 50

6  $9$  boxes of  $10$  pencils. 90

7  $50$  toffees put into  $5$  bags. 10

8  $20$  books put into  $2$  piles. 10

9  $20$  glasses put on to  $5$  shelves. 4

10  $20$  spades put into  $10$  buckets. 2

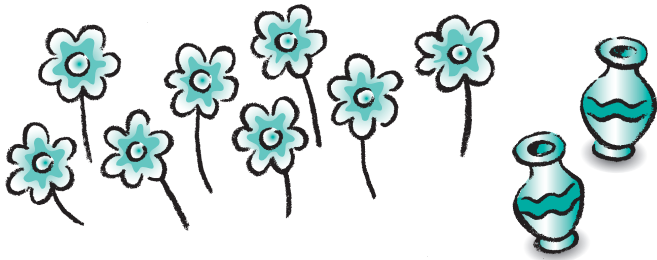
# Section 3 Session 5

## Session Focus

Multiplication and division facts for 2s, 5s and 10s

### A ANSWER

1  $6 \times 2p = 12p$



2  $8 \div 2 = 4$

3  $4 \times 5p = 20p$

4  $30 \div 5 = 6$

5  $6 \times 10p = 60p$

6  $80 \div 10 = 8$

7  $3 \times 5 = 15$

8  $70 \div 10 = 7$

9  $6 \div 2 = 3$

10  $25 \div 5 = 5$

### B ANSWER

1  $\square \times 5 = 35$  7

2  $\square \div 2 = 8$  16

3  $\square \div 10 = 3$  30

4  $\square \div 5 = 9$  45

5  $\square \times 2 = 14$  7

6  $\square \div 10 = 6$  60

7  $6 \times \square = 12$  2

8  $8 \times \square = 40$  5

9  $4 \times \square = 40$  10

10  $50 \div \square = 5$  10

### C ANSWER

1 How many  $5p$  make  $100p$ ? 20

2 How many  $2p$  make  $100p$ ? 50

3 How many  $10p$  make  $100p$ ? 10

4 Divide  $60$  by  $10$ . 6

5 Divide  $15$  by  $5$ . 3

6 Divide  $18$  by  $2$ . 9

7 Share  $35$  by  $5$ . 7

8 Share  $60$  by  $10$ . 6

9 Share  $10p$  by  $2$ . 5p

10 What is  $8$  lots of  $5p$ ? 40p



# Section 3 Session 6

Session Focus  
Addition and subtraction

## A ANSWER

1  $5 + \bullet\bullet\bullet = 9$

2  $15 + \bullet\bullet\bullet = 19$

3  $18 + \bullet\bullet\bullet\bullet = 25$

4  $28 + \bullet\bullet\bullet = 32$

5  $56 + \bullet\bullet\bullet = 60$

6  $19 - \bullet\bullet\bullet = 14$

7  $22 - \bullet\bullet\bullet = 18$

8  $36 - \bullet\bullet\bullet\bullet = 27$

9  $64 - \bullet\bullet\bullet = 59$

10  $72 - \bullet\bullet = 69$

## B ANSWER

What is

1  $30 + 23 = 53$

2  $46 + 30 = 76$

3  $94 - 40 = 54$

4  $64 - 50 = 14$

5  $30 + 40 = 70$

6 the difference between  $90$  and  $50$ ? 40

7 the difference between  $60$  and  $40$ ? 20

8 the difference between  $30$  and  $50$ ? 20

9  $23 - 8 = 15$

10  $35 - 7 = 28$

## C ANSWER

How much water?

1  $50\text{ml} + 20\text{ml} = 70\text{ml}$

2  $100\text{ml} - 70\text{ml} = 30\text{ml}$

3  $15\text{ml} + 10\text{ml} = 25\text{ml}$

How many library books?

4  $48 - 20 = 28$

5  $56 + 30 = 86$

6  $27 + 4 = 31$

7  $31 - 5 = 26$

8  $19 + 8 = 27$

9  $36 - 7 = 29$

10  $42 + 6 = 36$

# Section 3 Session 7

Session Focus  
Addition and subtraction

## A ANSWER

1  $16 + \text{four dots} = 20$

2  $13 - \text{four dots} = 9$

3  $\text{ten dots} + \text{four dots} = 14$

4  $\text{four dots} + \text{ten dots} = 14$

5  $16 - \text{eight dots} = 8$

6  $13 + \text{seven dots} = 20$

7  $\text{square} + \text{eight dots} = 20$       12

8  $16 + \text{square} = 20$       4

9  $14 + \text{square} = 20$       6

10  $7 + \text{square} = 20$       13

## B ANSWER

1  $\text{square} + 5 = 18$       13

2  $\text{square} + 9 = 17$       8

3  $11 + \text{square} = 16$       5

4  $18 - \text{square} = 6$       12

5  $15 - \text{square} = 9$       6

6  $\text{square} - 11 = 3$       14

7  $20 - \text{square} = 14$       6

8  $20 - \text{square} = 9$       11

9  $20 - \text{square} = 17$       3

10  $20 - \text{square} = 5$       15

## C ANSWER



How many if you have

1 16 buns and eat 5?      11

2 19 buns and eat 11?      8

3 23 buns and eat 8?      15

4 15 buns and 6 cakes?      21

5 12 buns and 7 cakes?      19

6 20 cakes and eat 7?      13

7 20 cakes and eat 12?      8

8 20 cakes and eat 16?      4

9 20 cakes and eat 19?      1

10 20 cakes and eat 6?      14

# Section 3 Session 8

Session Focus  
Addition and subtraction

## A ANSWER

1  $30 + 40 = 70$

2  $90 - 50 = 40$

3  $64 + 6 = 70$

4  $97 - 8 = 89$

5  $13 + 8 = 21$

6  $32 - 4 = 28$

7  $36 + 40 = 76$

8  $54 - 30 = 24$

9  $12 + 8 = 20$

10  $19 + 1 = 20$

## B ANSWER

What is

1 15 add 6? 21

2 21 subtract 4? 17

3 the difference between 21 and 18? 3

4 the total of 21 and 9? 30

5 45 minus 5? 40

6 34 and 30? 64

7 72 minus 40? 32

8 20 subtract 8? 12

9 20 take away 11? 9

10 20 subtract 18? 2

## C ANSWER

How many if you have

1 14 grapes and 6 more? 20

2 23 blueberries and eat 7? 16

3 74 pencils and break 5? 69

4 29 brushes and 7 more? 36

5 64 peaches and sell 30? 34

6 20 marshmallows and eat 8? 12

7 20 oranges and sell 4? 16

8 20 books and give away 13? 7



How much water?

9 45ml and another 20ml. 65ml

10 20ml and 11ml more. 31ml

# Section 3 Session 9

**Session Focus**  
Multiplication facts for 2s, 5s and 10s

## A ANSWER

1  $6 \times 2p = 12p$

2  $7 \times 5p = 35p$

3  $8 \times 10p = 80p$

4  $1 \times 2p = 2p$

5  $6 \times 10p = 60p$

6  $12 \div 2 = 6$

7  $15 \div 5 = 3$

8  $30 \div 10 = 3$

9  $18 \div 2 = 9$

10  $35 \div 5 = 7$

## B ANSWER

What is

1 6 multiplied by 5? **30**

2 7 multiplied by 10? **70**

3 10 multiplied by 2? **20**

4 25 divided by 5? **5**

5 14 divided by 2? **7**

6 40 divided by 10? **4**

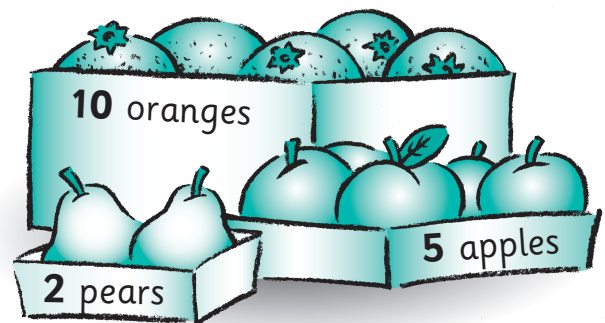
7 4 times 2? **8**

8 9 times 5? **45**

9 50 shared by 10? **5**

10 2 divided by 2? **1**

## C ANSWER



Write the totals.

1 5 boxes of oranges. **50**

2 6 boxes of apples. **30**

3 3 boxes of pears. **6**

4 7 boxes of oranges. **70**

5 8 boxes of pears. **16**

6 9 boxes of apples. **45**

7 10 boxes of oranges. **100**

There are

8 40 oranges. How many boxes? **4**

9 20 apples. How many boxes? **4**

10 4 pears. How many boxes? **2**

# Section 3 Session 10

## Session Focus

Multiplication and division facts for 2s, 5s and 10s

**A**

ANSWER

1  $3 \times$   =

2  $6 \times$   =

3  $2 \times$   =

4  $12 \div 2$  =

5  $15 \div 5$  =

6  $50 \div 10$  =

7  $7 \times$   =

8  $8 \times$   =

9  $9 \times$   =

10  $30 \div 5$  =

**B**

ANSWER

1   $\times 5 = 25$

2   $\times 10 = 90$

3   $\times 2 = 20$

4   $\div 5 = 7$

5   $\div 2 = 9$

6   $\div 10 = 4$

7  $50 \div$    $= 5$

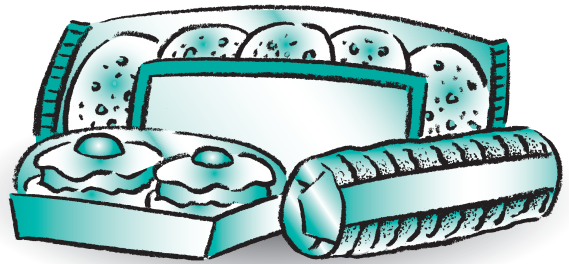
8  $40 \div$    $= 8$

9  $16 \div$    $= 8$

10  $80 \div$    $= 8$

**C**

ANSWER



Rolls are packed in **5s**.

Cakes are packed in **2s**.

Biscuits are packed in **10s**.

How many packs for

1 **30** rolls?

2 **60** biscuits?

3 **14** cakes?

4 **45** rolls?

5 **8** cakes?

6 **40** biscuits?

7 **20** cakes?

8 **35** rolls?

9 **60** biscuits?

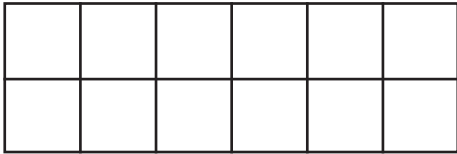
10 **70** biscuits?

# Section 3 Session 11

**Session Focus**  
Halves, quarters, three-quarters and one-third of numbers and shapes  
Addition and subtraction

## A ANSWER

1 How many squares are one-third of this shape? 4



What is

- 2  $\frac{1}{2}$  of 30? 15
- 3  $\frac{1}{4}$  of 20? 5
- 4  $\frac{3}{4}$  of 12? 9
- 5  $\frac{1}{3}$  of 6? 2
- 6  $32 + 8 =$  40
- 7  $27 - 6 =$  21
- 8  $34 - 8 =$  26
- 9  $66 + 34 =$  100
- 10  $75 - 44 =$  31

## B ANSWER

What is

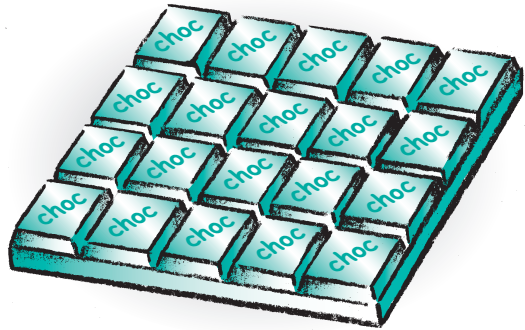
- 1  $\frac{3}{4}$  of 40? 30
- 2 half of 26? 13
- 3 one-third of 24? 8
- 4  $35 + 60 =$  95
- 5  $76 - 50 =$  26
- 6  $32 - 9 =$  23
- 7  $43 + 18 =$  61

8  $94 - 6 =$  88

9  $13 +$  7  $= 20$

10  $20 -$  14  $= 6$

## C ANSWER



How many squares for

- 1 half? 10
- 2 a quarter? 5
- 3 three-quarters? 15

How much water?

- 4 **50ml** and **25ml.** 75ml
- 5 **35ml** and **40ml.** 75ml
- 6 Start with **50ml.**  
Pour away **30ml.** 20ml
- 7 Start with **65ml.**  
Pour away **40ml.** 25ml

How many?

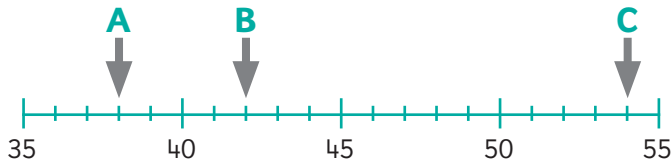
- 8 **27** books and another **7** books. 34
- 9 **58** cars and **9** cars leave. 49
- 10 **39** motorbikes and **15** more. 54

# Section 3 Session 12

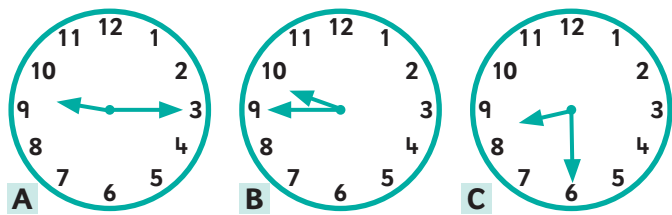
**Session Focus**  
 Read numbers on scales marked in 5s and 10s  
 Multiplication and division facts for 2s, 5s and 10s  
 Time  
 Word problems involving time

## A ANSWER

Write the number for each letter.



- 1 A 38
- 2 B 42
- 3 C 54
- 4  $8 \times 2$  = 16
- 5  $8 \times 5$  = 40
- 6  $8 \times 10$  = 80

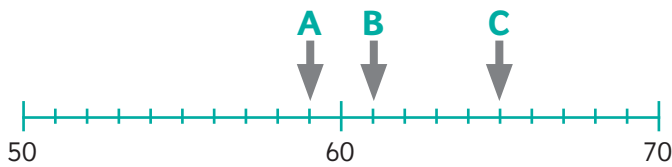


Write the times these clocks show.

- 7 A 9.15
- 8 B 9.45
- 9 C 8.30
- 10 How many minutes in an hour? 60

## B ANSWER

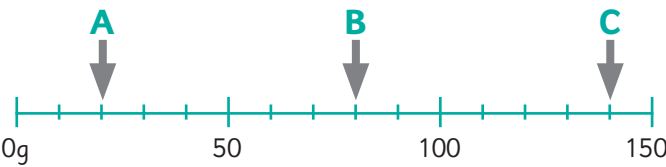
Write the value for each letter.



- 1 A 59
- 2 B 61
- 3 C 65

- 4  $60 \div 10$  = 6
- 5  $20 \div 5$  = 4
- 6  $14 \div 2$  = 7
- 7  $6 \times 2$  = 12
- 8  $9 \times 10$  = 90
- 9 How many minutes in a quarter of an hour? 15
- 10 Today is Thursday so tomorrow will be Friday

## C ANSWER



Write the value for each letter.

- 1 A 20g
- 2 B 80g
- 3 C 140g

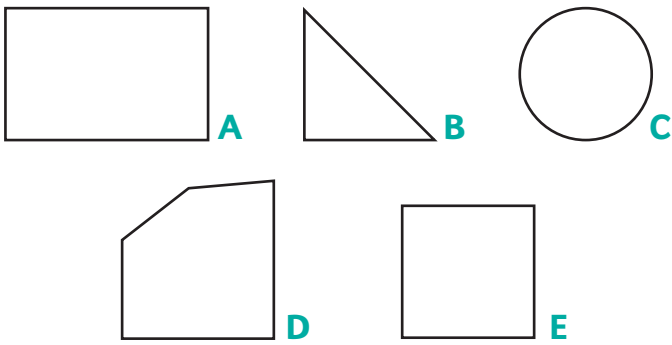
How many pens?

- 4 5 boxes of 10 pens. 50
- 5 35 pens shared between 5 boxes. 7
- 6 18 pens shared between 2 boxes. 9
- 7 6 packs of 2 pens. 12
- 8 Which day is before Sunday? Saturday
- 9 Which day is after Monday? Tuesday
- 10 The time is 2.15. What is the time in 2 hours? 4.15

# Check-up 1 Geometry

**Session Focus**  
Matching shapes to their pictures  
Right angles

## A ANSWER



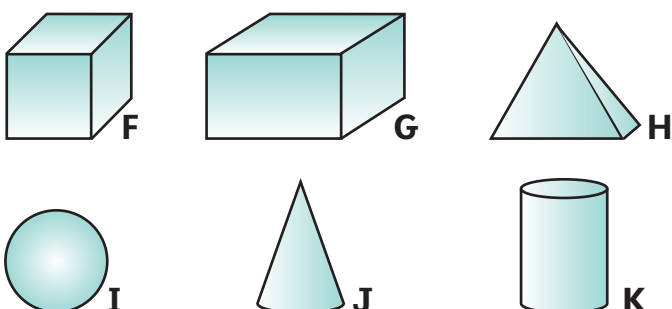
Name these 2-D shapes.

- |   |   |           |
|---|---|-----------|
| 1 | A | rectangle |
| 2 | B | triangle  |
| 3 | C | circle    |
| 4 | D | pentagon  |
| 5 | E | square    |

Write how many right angles.

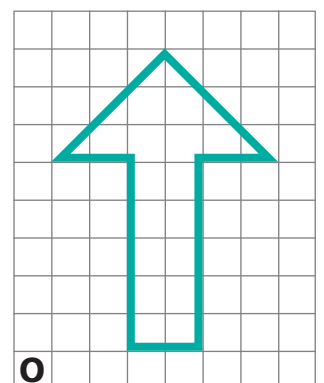
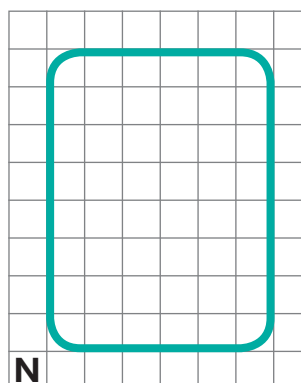
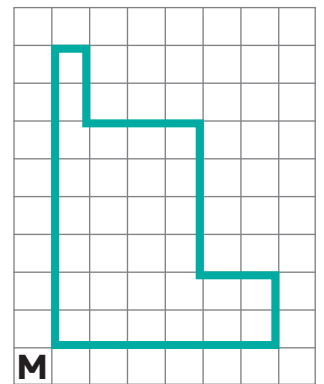
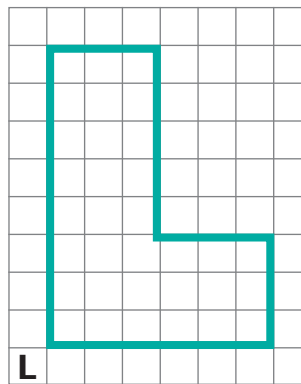
- |    |   |   |
|----|---|---|
| 6  | A | 4 |
| 7  | B | 1 |
| 8  | C | 0 |
| 9  | D | 2 |
| 10 | E | 4 |

## B ANSWER



Write the names of the 3-D shapes.

- |   |   |          |
|---|---|----------|
| 1 | F | cube     |
| 2 | G | cuboid   |
| 3 | H | pyramid  |
| 4 | I | sphere   |
| 5 | J | cone     |
| 6 | K | cylinder |



How many right angles inside these shapes?

- |    |   |   |
|----|---|---|
| 7  | L | 6 |
| 8  | M | 8 |
| 9  | N | 0 |
| 10 | O | 3 |



# Check-up 2 Statistics

**Session Focus**  
Sorting numbers into diagrams and charts  
Block graphs

**A** ANSWER **B** ANSWER

These are the numbers 1 to 30.

	Multiplication facts for 5s	Not Multiplication facts for 5s
Multiplication facts for 2s	10 20 <b>A</b>	2 4 6 8 12 14 16 18 22 24 26 <b>B</b>
Not multiplication facts for 2s	5 15 <b>C</b>	1 3 7 9 11 13 17 19 21 23 27 <b>D</b>

Write the missing numbers.

- 1 **A** 30
- 2 **B** 28
- 3 **C** 25
- 4 **D** 29

Now the numbers go to 40.

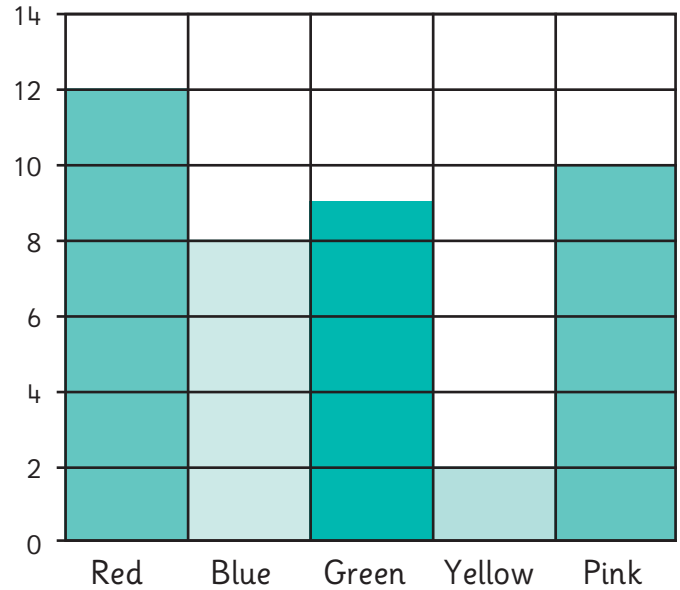
Write the next number after

- 5 **A** 40
- 6 **B** 32
- 7 **C** 35
- 8 **D** 31

Write a multiplication fact to go with

- 9 **A** 6 × 5
- 10 **C** 5 × 5

Here is a block graph.



- 1 Which is the most popular colour? red
- 2 Which is the least popular colour? yellow
- 3 How many more voted for red than blue? 4
- 4 How many fewer voted for yellow than green? 7
- 5 How many voted for red and blue in total? 20
- 6 How many voted for green and yellow in total? 11
- 7 How many voted for pink and blue in total? 18
- 8 Which colour is more popular than pink? red
- 9 Which colour is less popular than blue? yellow
- 10 How many votes are there altogether? 41

# Just Facts

Session Focus  
Pairs that make 20  
Add and subtract one- and two-digit numbers

$20 - 0 = 20$

$20 - 1 = 19$

$20 - 2 = 18$

$20 - 3 = 17$

$20 - 4 = 16$

$20 - 5 = 15$

$20 - 6 = 14$

$20 - 7 = 13$

$20 - 8 = 12$

$20 - 9 = 11$

$20 - 10 = 10$

$20 - 11 = 9$

$20 - 12 = 8$

$20 - 13 = 7$

$20 - 14 = 6$

$20 - 15 = 5$

$20 - 16 = 4$

$20 - 17 = 3$

$20 - 18 = 2$

$20 - 19 = 1$

$20 - 20 = 0$

$98 - 5 = 93$

$98 - 15 = 83$

$98 - 25 = 73$

$98 - 35 = 63$

$98 - 45 = 53$

$98 - 55 = 43$

$98 - 65 = 33$

$98 - 75 = 23$

$98 - 85 = 13$

$98 - 95 = 3$

$93 - 7 = 86$

$93 - 17 = 76$

$93 - 27 = 66$

$93 - 37 = 56$

$93 - 47 = 46$

$93 - 57 = 36$

$93 - 67 = 26$

$93 - 77 = 16$

$93 - 87 = 6$

$16 + 8 = 24$

$16 + 18 = 34$

$16 + 28 = 44$

$16 + 38 = 54$

$16 + 48 = 64$

$16 + 58 = 74$

$16 + 68 = 84$

$16 + 78 = 94$

$16 + 88 = 104$

$16 + 98 = 114$

$5 + 17 = 22$

$15 + 17 = 32$

$25 + 17 = 42$

$35 + 17 = 52$

$45 + 17 = 62$

$55 + 17 = 72$

$65 + 17 = 82$

$75 + 17 = 92$

$85 + 17 = 102$

# Just Facts

Session Focus  
Multiplication facts for 2s, 5s and 10s

## Multiplication facts for 2s

$1 \times 2$	=	2
$2 \times 2$	=	4
$3 \times 2$	=	6
$4 \times 2$	=	8
$5 \times 2$	=	10
$6 \times 2$	=	12
$7 \times 2$	=	14
$8 \times 2$	=	16
$9 \times 2$	=	18
$10 \times 2$	=	20
$11 \times 2$	=	22
$12 \times 2$	=	24

## Multiplication facts for 5s

$1 \times 5$	=	5
$2 \times 5$	=	10
$3 \times 5$	=	15
$4 \times 5$	=	20
$5 \times 5$	=	25
$6 \times 5$	=	30
$7 \times 5$	=	35
$8 \times 5$	=	40
$9 \times 5$	=	45
$10 \times 5$	=	50
$11 \times 5$	=	55
$12 \times 5$	=	60

## Multiplication facts for 10s

$1 \times 10$	=	10
$2 \times 10$	=	20
$3 \times 10$	=	30
$4 \times 10$	=	40
$5 \times 10$	=	50
$6 \times 10$	=	60
$7 \times 10$	=	70
$8 \times 10$	=	80
$9 \times 10$	=	90
$10 \times 10$	=	100
$11 \times 10$	=	110
$12 \times 10$	=	120

# Just Facts

Session Focus  
Division facts for 2s, 5s and 10s

## Division facts for 2s

$2 \div 2$	=	1
$4 \div 2$	=	2
$6 \div 2$	=	3
$8 \div 2$	=	4
$10 \div 2$	=	5
$12 \div 2$	=	6
$14 \div 2$	=	7
$16 \div 2$	=	8
$18 \div 2$	=	9
$20 \div 2$	=	10
$22 \div 2$	=	11
$24 \div 2$	=	12

## Division facts for 5s

$5 \div 5$	=	1
$10 \div 5$	=	2
$15 \div 5$	=	3
$20 \div 5$	=	4
$25 \div 5$	=	5
$30 \div 5$	=	6
$35 \div 5$	=	7
$40 \div 5$	=	8
$45 \div 5$	=	9
$50 \div 5$	=	10
$55 \div 5$	=	11
$60 \div 5$	=	12

## Division facts for 10s

$10 \div 10$	=	1
$20 \div 10$	=	2
$30 \div 10$	=	3
$40 \div 10$	=	4
$50 \div 10$	=	5
$60 \div 10$	=	6
$70 \div 10$	=	7
$80 \div 10$	=	8
$90 \div 10$	=	9
$100 \div 10$	=	10
$110 \div 10$	=	11
$120 \div 10$	=	12